



UNIVERSITY OF  
GOTHENBURG

# 2021

## ANNUAL REPORT

---

THE PROGRAM ON  
GOVERNANCE AND LOCAL  
DEVELOPMENT





# TABLE OF CONTENTS



## ABOUT US

Director’s Note  
GLD in Numbers  
The Team  
Visiting Scholars  
Short-Term Grant Awardees



## OUR RESEARCH

New Projects  
Ongoing Projects  
Projects Completed in 2021  
GLD Data



## OUR WORK

Workshops  
Governance Uncovered  
Publications



## WHAT’S NEXT? GLD IN 2022

Upcoming projects and events

Report produced by the Program on Governance and Local Development

Annual Report Team: Sara Bjurevall, Ellen Lust, and Rose Shaber-Twedt  
Design: Dahlbäck/Söderberg  
Photo Credits: Adobe Stock, Flickr, Getty Images, Pexels, Sara Bjurevall, UN Women Arab States, and Unsplash

Follow us: Twitter, Facebook, LinkedIn, Newsletter

The views and opinions expressed in publications cited in this report are those of the authors. They do not necessarily reflect an official position of the GLD Program.



# ABOUT US

The Program on Governance and Local Development (GLD) is a research program based at the University of Gothenburg. Originally founded in 2013 at Yale University by Program Director, Professor Ellen Lust, GLD focuses on the local factors driving governance and development. The program is dedicated to international collaboration and scientifically rigorous, policy-relevant research in an effort to promote human welfare globally. Program findings are made available to the international and domestic communities through academic publications, policy briefs, public presentations, and social media, as well as workshops in cooperation with local partners.



# DIRECTOR'S NOTE

If 2020 was the year of the pandemic, then 2021 was the year of adaptation. We found new ways to work and grow, moving much of our work on-line and extending global collaborations that are key to high-quality research. We learned many lessons that we look forward to taking with us into the future. But we also miss being in the same room together and hope that 2022 is the year we will all meet again.

GLD remains committed to promoting a global network engaged in rigorous, policy relevant research on governance and local development, and in 2021, we used on-line engagement as the primary way to achieve this. In total, we held 31 online events, joined by 86 presenters from 65 universities and 20 countries. This included our 5th Annual Conference, Governance, People and Space. After having to cancel it in 2020, we moved it online and transformed it into a fall annual conference series where a set of 21 scholars presented fascinating, interdisciplinary research on topics ranging from voter behavior to the role of public spaces in reconciliation. We also held two sets of workshops for on-going research projects: one on Gender in the Middle East and North Africa, and a second on Survey Measures of Punishment, Revenge, and Forgiveness in Post-Conflict Settings. At times, some of us had to wake up in the early hours of the morning or stay up way past bedtime in order to make these events work, but it was well worth it.

We started two new long-term initiatives that take advantage of our increasing comfort and facility with virtual workshops. The first are work-in-progress workshops, where we come together to provide critical, constructive feedback on research in progress, and the second are policy roundtables, which are aimed at discussing research on critical policy issues with practitioners and policymakers. We organized our first policy roundtable in October, bringing experts to discuss the local implications of the September Moroccan elections. While we recognize that all of us feel a degree of Zoom fatigue, we also value the ability to bring together global communities in an environmentally friendly and cost-effective manner. Thus, we intend to continue these meetings in hybrid format.



Despite the global challenges in 2021, we also maintained an exciting research agenda. Our newly expanded data team fielded 17 surveys. Some of these were part of our project, Developing a Locally Rooted Approach to Covid-19 Response, concluded this year. Those interested in learning about key findings can check out the report Fears, Vulnerabilities, and Precautions over Covid-19: A Report on Citizens' Experiences in Malawi and Zambia, which summarizes key findings on citizens' experiences on the local impact of Covid-19 in Malawi and Zambia. We also implemented the Zambian Election Panel Survey (ZEPS). To our knowledge, ZEPS is the first multi-stage panel to examine the electoral process in sub-Saharan Africa. We greatly enjoyed developing new collaborations with Jeremy Seekings and Matthias Krönke at University of Cape Town, Michael Wahman at Michigan State University, and Nicole Beardsworth at University of the Witwatersrand.

And, we continued to work hard to make sure the results of research are disseminated widely. In 2021, GLD published 18 working papers, 6 reports, 8 volumes of the GLD eJournal via SSRN, 9 peer-reviewed articles, 6 book chapters, and 6 policy briefs. It broadcast 11 podcast episodes and held 43 presentations. In the report that follows, you will find more detailed information about all our collaborators, projects, publications, presentations, and workshops.



GLD remains committed to promoting a global network engaged in rigorous, policy relevant research on governance and local development, and in 2021, we used on-line engagement as the primary way to achieve this. In total, we held 31 online events, joined by 86 presenters from 65 universities and 20 countries.

Looking forward, we are excited about 2022. We continue to see the GLD team grow. As we entered the new year, we welcomed our first cohort of GLD Fellows from around the world and expanded our Gothenburg team. In addition to this, we are starting several interesting projects: Combining Satellite images and Artificial Intelligence to Measure Poverty from 1982-2020, that uses data to explain the effects of the World Bank and Chinese development programs in Africa; Survive, Thrive, or Deplete? Drivers and Outcomes of Resilience During the Covid-19 Pandemic in Malawi, which examines why some individuals and communities respond better than others to crises, and the longer-term effects of crises on governance and welfare; and Governance and Local Development in the

Middle East and North Africa, that promotes policy-relevant research and promising scholars on, and in, the MENA region. 2022 will undoubtedly be a busy but inspiring year for GLD.

Of course, none of these efforts would succeed without the team, colleagues, community, and donors who provide GLD with the support, inspiration, and resources that allow us to grow. I am grateful for the expanding interest in GLD and what we do, and the scholarly engagements, organizational contributions, and financial backing we are given. The Swedish Research Council continues to fund the Program's infrastructure and additional grants from Carnegie Cooperation of New York, FORMAS, Hicham al Alaoui Foundation, Riksbankens Jubileumsfond, the Swedish Research Council, Lundgrens Stiftelser, and the Folke Bernadotte Academy have made our work possible. Finally, I would like to give my sincerest appreciation to the Department of Political Science at the University of Gothenburg for housing the program and the tremendous support and collegiality they offer. I look forward to continued collaboration.

Ellen Lust  
Director



# TEAM MEMBERS

## DIRECTOR



Ellen Lust  
Founding Director

Ellen Lust is the **Founding Director** of the Programs on Governance and Local. She also serves as a Non-Resident Senior Fellow at the Project on Middle East Democracy in Washington, DC. Ellen has held faculty positions at Rice University and Yale University and was a visiting scholar at the Institute of Graduate Studies (Geneva, Switzerland) and the Straus Institute at NYU. Ellen has conducted fieldwork and implemented surveys in Egypt, Jordan, Libya, Morocco, Palestine, Syria, and Tunisia. She has authored numerous books and articles, in-

cluding most recently, Trust, Voice, and Incentives: Learning from Local Successes in Service Delivery in the Middle East and North Africa, (Washington, DC: World Bank, 2015) in collaboration with Hana Brixi and Michael Woolcock. She was a co-founder of the Transitional Governance Project, a founding associate editor of Middle East Law and Governance, and has served as an advisor and consultant to such organizations as the Carter Center, Freedom House, NDI, UNDEF, UNDP, USAID, and the World Bank.

## RESEARCH TEAM



Connor Jerzak  
Visiting Scholar



Jennifer Bergman  
Associate Researcher



Kristen Kao  
Senior Research Fellow



Mina Ghassaban Kjellén  
Associate Researcher



Thabit Jacob  
Postdoctoral Researcher

## MANAGEMENT



Dalila Sabanic  
Program & Financial Manager



Rose Shaber-Twedt  
Director's Assistant & Program Coordinator



Olivia Östlin  
Communications Officer



Sara Bjurenvall  
Communications Officer



Tove Wikehult  
Programme Coordinator

## DATA TEAM



Cecilia Ahsan Jansson  
Data Analyst



Erica Ann Metheney  
Statistician & Head of GLD Data



Kirk Ammerman  
Survey Manager



Marcus Skog  
Data Manager

## INTERNS

### Spring

Adilhan Adil (Turkey); Daniela Völp (Germany); Jennifer Bergman (Sweden); Katelyn Nutley (USA); Samuel Larsson (Sweden).

### Fall

Hanna Andersson (Sweden); Linnéa Nirbrant (Sweden); Lucas Fisher Madsen (Sweden); Mariana Martins Cardoso (Portugal); Sinamis Doughouz (Syria).

## PHD STUDENTS

Elise Tengs, Ezgi Irgil, Felix Dwinger, Felix Hartman, Prisca Jöst, Valeriya Mechkova.

## STEERING COMMITTEE

A warm thank you to the GLD Steering Committee!

Adam Harris (University College London); Boniface Dulani (Chancellor College, University of Malawi); Ellen Lust (University of Gothenburg); Jennifer Murtazashvili (University of Pittsburgh); Karen E. Ferree (University of California, San Diego); Kristen Kao (University of Gothenburg); Marwa Shalaby (University of Wisconsin-Madison); Mine Eder (Boğaziçi University) and Pierre F. Landry (Chinese University of Hong Kong).

## DEPARTURES

This year we said goodbye to some good friends and colleagues. We want to thank them for their excellent work over the years and wish them all the best as they embark on new and exciting adventures!

Cecilia Ahsan Janson (Data Analyst); Marcus Skog (Data Manager); Olivia Östlin (Communications Officer).





# VISITING SCHOLARS

**W**hile at GLD, you plan to link your ongoing research (energy transition) with local engagement and sustainable energy practices. Why is it important to understand the linkages between the two?

Our new research project will be investigating, among other things, what is driving the adoption and resistance to renewable energy projects in Ghana and Tanzania. It's important to link this with local engagement because new renewable energy projects, such as wind and solar, can generate change in rural landscapes. But, as we have observed elsewhere (Latin America, for instance), these changes tend to provoke resistance from local communities directly impacted by these projects. So, as much as these renewable energy projects and energy transitions promise a sustainable future, they generate social and political contestations at the sub-national level, which is also worth scrutinizing.

**You moved from Denmark to Sweden earlier this year. How would you say that life as a researcher differs between the two Scandinavian countries?**

It is still early days to make comparisons, but these two countries are fairly similar in so many ways. Apart from Denmark, in the last six years, I have also lived in the US (Michigan) and UK (Sheffield), and before moving to Gothenburg, I had offers in Canada (Toronto) and Germany (Trier). It's too early to make a judgment about Sweden and Gothenburg specifically; I will have to wait perhaps after a year to draw comparisons with other places I have been.

**You are good at using Twitter to communicate issues related to your research and actively participate in discussions. What do you see as the most important issues to engage in with the public?**

Yes, I'm a big fan of Twitter. I joined basically to catch up with news and later to share research and make new connections. I would say Twitter is a great place to communicate findings with a non-academic audience. Personally, the nature of my public engagement changed dramatically from 2017 when Tanzania was sliding towards authoritarianism; I was one of the very few who were critical of the state and paid a heavy price for doing so.



THABIT JACOB

**Work:** Postdoctoral Researcher at the Program on Governance and Local Development.  
**Reaseach focus:** The political economy of development, with a close focus on the politics of the extractive industries and energy.

“ So, as much as these renewable energy projects and energy transition promise a sustainable future, they generate social and political contestations at the sub-national level, which is also worth scrutinizing.

Still, I have no regrets whatsoever. As academics, we have to hold those in power to account, and I did my part. I know academics, practitioners, and policymakers are all encouraged to have a presence on Twitter; it's a great platform, but I understand it's not one of the metrics that academics are judged on, so I get it for those who don't want to be there. It is also worth pointing out that Twitter can be a very toxic space at times, some trolls and bots post vile comments, but that's why Twitter gives options such as muting, unfollowing, and blocking to navigate around and keep your sanity. Also, in my case, with big followings, there is a need to be responsible for what you post, I've managed to do this while remaining authentic, but it's tricky. I would still encourage everyone to get a Twitter account though!

**Y**ou have experience from several research collaborations. Why do you believe collaboration within research and academia is important?

Doing research is a little like building a city. With a city, we need to construct roads, design the water treatment and distribution system, build good housing, and so forth. With a research project, we need to come up with the initial idea, wrangle data, write up the empirical results, position the contribution in the literature, and so forth. Naturally, if we work together, we can contribute our strongest aspect to the project, so that the quality ceiling is higher.

**What has been your main research focus in 2021?**

The focus in 2021 has been about finalizing the research done for my dissertation and starting a few new projects about satellite images and causal inference. The projects all vary, but the theme has been devising useful quantitative research tools that others can use in their work, especially working with new forms of data (such as from text or social networks).

**While at GLD, you will use satellite data to improve our understanding of poverty in Africa. Could you give us a better insight into how?**

Satellite data has unparalleled temporal and geographic resolution --- we have data on every 30-by-30-meter wedge of the continent updated every few weeks going back to the 1970s and sometimes before. We are pursuing whether and how we can use that data to separate correlation from causation in the analysis of aid programs in Africa by better understanding how programs receiving aid are different from those that do not. We're excited to work with GLD in validating some of these approaches and further understanding the dynamics of poverty in Africa.

**What do you look forward to in 2022?**

We have a lot to look forward to in 2022. It's really rewarding to see projects through to the end, so it'll be great to get to that point with a few projects. Also, I'll start teaching methods courses in September, so I'm really looking forward to that as the methods students will learn can be so empowering. Good tools make hard problems simple!



CONNOR JERZAK

**Work:** Postdoctoral Researcher at the Institute for Analytical Sociology at Linköping University.  
**Reaseach focus:** Political methodology, with applications in political economy and comparative politics.

“ With a research project, we need to come up with the initial idea, wrangle data, write up the empirical results, position the contribution in the literature, and so forth. Naturally, if we work together, we can contribute our strongest aspect to the project, so that the quality ceiling is higher.



# SHORT-TERM GRANT AWARDEES

GLD supports researchers around the world through our ongoing Short-Term Grant program. This year, we awarded three grants to scholars from India, the US, and Brazil. All awardees have been asked to submit Covid-19 compatible research plans to complement their applications.



Adam Auerbach



Tanu Kumar



Adan Martinez

**Adam Auerbach** (American University) and **Tanu Kumar** (William & Mary’s Global Research Institute). **Project Title:** Citizenship Practise in India’s Middle-Class Unauthorized Colonies. **Research Country:** India.

“ In this project, we explore the political dynamics of unauthorized colonies, or middle-class informal settlements, in Jaipur, India. Using semi-structured phone interviews, we describe these settlements as theoretically distinct from slum settlements and generate hypotheses about when and why they eventually become authorized or legalized. Our project aims to understand citizenship practice among a widespread but understudied group of urban citizens.

**Adan Martinez** (University of California, Berkeley). **Project Title:** Brazilian Subnational Everyday Health and Pandemic Politics. **Research Country:** Brazil.

“ My project focuses on the political motivations for the implementation, or lack thereof, of non-pharmaceutical COVID-related policies in Brazilian municipalities. Most studies to date have focused exclusively on the relationship between political partisanship and policy implementation in the United States and Europe, but in low- and middle-income countries like Brazil, political party structures are very weak, and politicians tend to switch parties. Therefore, this project aims to identify the multitude of local actors (e.g., neighborhood councils, non-profits, and business associations) that influence a municipality’s decision to implement or not implement these policies.

# GLD IN NUMBERS

43 PRESENTATIONS

23 WORKSHOPS AND SEMINARS

18 WORKING PAPERS

11 PODCAST EPISODES

8 FIELDED SURVEYS

6 POLICY BRIEFS



# OUR RESEARCH

In 2021, GLD carried out 11 research projects, including two new projects and three completed ones. These projects span 16 countries located in the Middle East and North Africa, Sub-Saharan Africa, and Scandinavia. In accordance with the GLD mission, our projects all deal with governance and local development issues, such as local elections, decentralization, social institutions, forced migration, and poverty. Our projects are collaborative and made possible by the meaningful participation of our research partners and the generosity of our funding organisations. You can find more information about all our projects on the following pages.

## OUR PROJECTS

1. LGPI (Local Governance Performance Index). **Malawi, Zambia, Kenya, and Tunisia (so far)**.
2. Developing a Locally Rooted Approach to Covid-19 Response **Malawi and Zambia**.
3. Social Institutions and Governance: Lessons from Sub-Saharan Africa **Kenya, Malawi, and Zambia**.
4. Urbanization in Sub Saharan Africa: **Kenya, Malawi, and Zambia**.
5. Public Goods Provision in the Shadow of Urbanization: Learning from Experiences in **Kenya, Malawi, and Zambia**.
6. Gender and Politics in the Middle East and North Africa: A Decade after the Arab Uprisings. **Middle East (Tunisia, Turkey, Algeria, Morocco, Syria, Lebanon, Iran, Iraq, Israel, Palestina, Jordan, Egypt)**.
7. Refugee Migration And Cities: Social Institutions, Political Governance, and Integration In **Jordan, Turkey, and Sweden (SIPGI)**.
8. From Revenge to Forgiveness: Strengthening Durable Peace in Post-Conflict Societies. (**Iraq**)
9. To Punish or to Pardon? Attitudes Towards Justice and Reintegration for Europeans who Cooperated with the Islamic State. (**Sweden**)
10. Combining Satellite Images and Artificial Intelligence to Measure Poverty in 1982-2020. Explaining the Effects of World Bank and Chinese Development Programs in Africa. (**Malawi**)
11. The Zambian Election Panel Survey (ZEPS). (**Zambia**)





# NEW PROJECTS 2021

## Combining Satellite Images and Artificial Intelligence to Measure Poverty in 1982-2020: Explaining the Effects of World Bank and Chinese Development Programs in Africa.

About 300 million people in Africa live in extreme Poverty. Living in impoverished communities can trap people in cycles of deprivation ('poverty traps'). Major development actors such as China and the World Bank thus implement projects to break these cycles ('poverty targeting'). However, scholars and practitioners face data challenges. Research has not answered fundamental questions such as whether, where, and when poverty traps exist, or how to evaluate the extent interventions can release communities from such traps?

This project aims to identify poverty traps in African communities and examine how competing development programs can alter their prospects of freeing themselves from deprivation and will run 2021-. This project will be led by Adel Daoud (Linköping University), in collaboration with GLD and scholars at the University of Gothenburg, Chalmers University of Technology, Linköping University, and Harvard University.

**Principal Investigators:** Adel Daoud (Linköping University); Devdatt Dubhashi (Chalmers University of Technology); Ellen Lust (University of Gothenburg); Fredrik Johansson (Chalmers University of Technology); Maria Brandén (Linköping University); Peter Hedström (Linköping University); Xiao-Li Meng (Harvard University).

**Funding:** Vetenskapsrådet

### FUNDING IN MILLION SEK:

12,239



Photo: United States Geological Survey

“ This project aims to identify poverty traps in African communities and examine how competing development programs can alter their prospects of freeing themselves from deprivation.



Photo: Liesl Harewood

## The Zambian Election Panel Survey (ZEPS)

The 2021 election was a crucial test for Zambian democracy. The potential for democratic erosion, a decline in meaningful participation, and prospects for election-related violence heightened concerns about democracy in Zambia among both local and international stakeholders. However, the tenuous situation in Zambia also presented an opportunity to interrogate long-held assumptions about democracy in Africa.

GLD collaborated with scholars at the University of Cape Town, Michigan State University University of the Witwatersrand to implement a panel survey aimed at uncovering trends and changes in Zambian public opinion during the 2021 election. The Zambia Election Panel Survey (ZEPS) is a first-of-its-kind, voter panel survey, which will provide a basis for research focused on democracy and institutions, political campaigns and voter choice, and COVID-19 and political participation.

**Principal Investigators:** Ellen Lust (University of Gothenburg), Jeremy Seekings (University of Cape Town), Michael Wahman (Michigan State University), Matthias Krönke (University of Cape Town) and Nicole Beardsworth (University of the Witwatersrand).

**Partners:** Ubuntu Research and Rural Development Company Ltd.

**Related Publications:** Breadsworth, Nicole; Krönke, Matthias; Lust, Ellen; Seekings, Jeremy, and Wahman, Michael. (2021). "Great Challenges, High Hopes," The Program on Governance and Local Development at the University of Gothenburg: December, 2.

**Funding:** University of Cape Town, Vetenskapsrådet.



Scan the QR-code to learn more



# ONGOING PROJECTS

## Local Governance Performance Index: An Approach to the Measurement, Analysis, and Improvement of Local Governance

**T**he Local Governance Performance Index (LGPI) provides a new approach to measuring, analyzing, and improving local governance. The LGPI employs household surveys to gather micro-level data from communities regarding cross-cutting governance issues: specifically, barriers for health, education, security, voice and participation. Thus, the LGPI collects, assesses, and benchmarks detailed information on local governance and service delivery issues.

To measure these dimensions, the LGPI emphasizes citizens’ experiences. Individuals are asked, for instance, if they had previous problems regarding education, health, and other sectors. We then ask whether they took action to address these issues, what actions they took to do so (e.g., using informal payments, personal connections), and whether their needs were met.

The survey allows us to pinpoint individuals with unmet needs and further probe the experiences of those who accessed these services. It also allows us to ask about the quality of service delivery, any problems with whom they asked for help, and the outcomes of that process. These surveys provide a detailed map of institutional strengths and weaknesses, as experienced by citizens. This information can be combined with data gathered from civil servants, local elites, and service providers to yield a full picture of governance.

### LGPI-Centric Projects:

- 2015 LGPI Tunisia
- 2016 LGPI Malawi
- Social Institutions and Governance: Lessons from Sub-Saharan Africa
- The Governance Challenges of Urbanization
- Public Goods Provision in the Shadow of Urbanization: Learning from Experiences in Malawi, Zambia, and Kenya



### The LGPI moves beyond standard governance measures in five important ways:

- First, it overcomes the problems of user-based surveys.
- Second, the LGPI measures governance at the subnational level.
- Third, the LGPI allows us to consider governance experiences that go beyond geographically delineated communities.
- Fourth, the LGPI focuses on governance by both state and non-state actors.
- Fifth, the LGPI permits us to examine and compare relationships between governance and outcomes across sectors.

The LGPI provides critical feedback to help government officials, political parties, civil society actors, the public, and the international development community by assessing governance and service delivery at the local level.



## Public Goods Provision in the Shadow of Urbanization: Learning from Experiences in Kenya, Malawi, and Zambia

**T**his project aims to forge long-term partnerships with local research institutions in Malawi, Zambia, and Kenya. Two junior scholars from each country have been selected to work with senior scholars from Higher-Income Countries (HICs) to develop and implement research projects based on the 2019 LGPI Data. Over two years, the junior scholars and HIC scholars have engaged in a series of online workshops and one-to-one meetings to develop analysis plans, review existing data, and implement any necessary supplemental data collection.

Due to current circumstances, all workshops and meetings were held online, but the final projects will be presented at the 2022 GLD Annual Conference.

**Principal Investigator:** Erica Ann Metheney.  
**Funding:** Swedish Research Council.

### FUNDING IN SEK:

796 735



## Governance and Local Development in the MENA: Edited Book Project

**R**egional-level discourse has tended to focus on national and international forces affecting the refugee crises and terrorism, but individuals that ‘live locally’ can not be forgotten. This project aims to deepen our understanding of local governance in the MENA region. Scholars from Europe, the MENA region, and the US have employed a wide range of methodological and theoretical approaches and examined a diverse set of cases to better understand subnational governance in the MENA region.

This project will culminate in an edited volume that will explore comparative decentralization, state-building and power, gender, service provision, and social cohesion at the local level around the MENA region.

**Principal Investigators:** Ellen Lust and Kristen Kao.  
**Funding:** Hicham Alaoui Foundation.

### FUNDING IN MILLION SEK:

1,8





Gender and Politics in the Middle East and North Africa: A Decade after the Arab Uprisings

The momentous upheavals in the MENA region since 2011 have had substantial implications for gender politics. This project explores how the old paradigms, realities, and contexts for studying gender and politics in the region have been shaped and reshaped by unfolding political transformations since the onset of the uprisings. We convened a workshop series in May 2021 to examine these changes and will continue the discussion at an in-person workshop in May 2022. Papers from both workshops will be collated in 5 special issues (Forthcoming 2022). The workshops and publications are a collaborative effort by researchers at the Program on Governance and Local Development (GLD), the Quality of Government (QoG) Institute, the University of Wisconsin-Madison, and the Working Group on Gender and Politics MENA.

**Principal Investigators:** Ellen Lust, Marwa Shalaby (University of Wisconsin-Madison), and Lena Wängnerud (QoG Institute, University of Gothenburg).  
**Funding:** Riksbankens Jubileumsfond.

FUNDING IN SEK:  
446 000

Local Governance under Decentralisation: Oman and in the Arab Region

This two-year study of Omani governance seeks to better understand the challenges of decentralization processes in transitioning states. The study planned to employ a multi-method approach to explore the challenges and potential impacts of decentralization. The goal was to expand our understanding of decentralization in the Omani context and establish sustainable scholarly and policy-relevant networks and dialogues around these issues. GLD engaged with scholars, policy experts, and officials from Oman and elsewhere in the Middle East, Europe, and the United States as part of this project.

In the wake of Covid-19, the project was revised to explore more broadly how the gender composition of deliberative bodies around the MENA region affects citizens’ perceptions of their outcomes. This question is key to understanding how gender representation may affect citizens’ views of local government outcomes, ideally gaining additional powers under decentralization—this part of the project employed telephone survey experiments conducted in Jordan, Morocco, and Tunisia.

This project is a collaborative effort between GLD and the University of Wisconsin-Madison.

**Principal Investigators:** Ellen Lust, Kristen Kao, and Marwa Shalaby (University of Wisconsin-Madison).  
**Survey Partners:** NAMA Strategic Intelligence Solutions (Jordan), One to One for Research and Polling (Morocco), ELKA Consulting (Tunisia).  
**Funding:** Carnegie Corporation of New York.

FUNDING IN MILLION SEK:  
3,3



Photo: Name Nameson

Refugee Migration and Cities: Social Institutions, Political Governance, and Integration In Jordan, Turkey, and Sweden (SIPGI)

This project asks how urban municipalities address forced migration and the effects of changes in neighborhood compositions on the social norms and behaviors of refugee and host population members. SIPGI implements collaborative research projects in cities hosting Syrian refugees in Jordan, Sweden, and Turkey. The project fills a critical gap in migration studies through its innovative methods - including large N surveys, elite interviews, urban ethnography, and field experiments with virtual reality 360-video technology. The project also provides an infrastructure for collaboration between international scholars with expertise in migration studies, political science, and anthropology in Sweden and the Middle East. SIPGI is a collaborative effort between GLD, the School of Global Studies at the University of Gothenburg, the Centre for Middle Eastern Studies at Lund University, and the Migration Research Centre at Koc University, Istanbul.

**Principal Investigators:** Andrea Spehar (School of Global Studies) and Kristen Kao.  
**Partners:** Isabell Schierenbeck (School of Global Studies); Mine Eder (Bogacizi University) and Joshka Wessels (Malmö University).  
**Funding:** Swedish Research Council.

FUNDING IN MILLION SEK:  
17,9



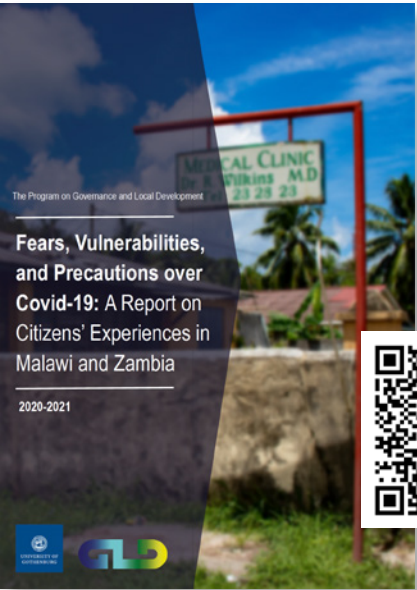


# PROJECTS COMPLETED IN 2021

## Developing a Locally Rooted Approach to Covid-19 Response

In March 2020, Zambia and Malawi reported their first cases of Covid-19, with both governments restricting non-essential travel, banning large public gatherings, and establishing emergency committees to spearhead efforts to contain the pandemic at a national level. GLD implemented a study in 2020 in both Malawi and Zambia to gain a better understanding of citizens' responses to such measures, and the impact of the pandemic on their individual lives and communities. In order to generate as complete a picture as possible of the local situations over time, we conducted three survey rounds in Malawi and two rounds in Zambia. These rounds provided a total of 17,643 observations, gathering information on issues including knowledge of Covid-19; attitudes and fears surrounding health and economic impacts; social, economic, and health vulnerabilities; social distancing practices and other preventative measures. Particular attention was paid to the local variation in concerns over the social stigma, levels of enforcement, and engagement of different authorities.

**Funders:** FORMAS and the Swedish Research Council.  
**Principal Investigator:** Ellen Lust.  
**Partners:** *Survey Implementation:* Ubuntu Research and Rural Development Company Ltd. (Zambia) and The Institute of Public Opinion and Research (Malawi).  
*Dissemination:* SAIPAR (Zambia), ZIPAR (Zambia), and The Institute of Public Opinion and Research (Malawi).



In November 2021, we released a cumulative report summarizing the key findings, entitled "Fears, Vulnerabilities, and Precautions over Covid-19: A Report on Citizen's Experiences in Malawi and Zambia." You can read the report by scanning the QR-code.





Social Institutions and Governance:  
Lessons from Sub-Saharan Africa

**T**his project aims to develop a unified theory of social institutions to understand how, when, and where they promote good governance and improve daily lives. The study conceptualises and measures social institutions, focusing on the strength, nature, and content of social interactions’ norms and rules. Paying particular attention to social institutions governing gender and ethnic relations, this project takes a multi-method approach, leveraging surveys, experiments, focus groups, and stakeholder interviews in Kenya, Malawi, and Zambia to examine the links between social institutions and governance.

**Principal Investigator:** Ellen Lust.  
**Survey Partners:** Ubuntu Research and Rural Development Company Ltd. (Zambia), Ipsos (Kenya), and The Institute of Public Opinion and Research (Malawi).  
**Funding:** Swedish Research Council.

FUNDING IN MILLION SEK:  
**7,8**



Urbanization in Sub Saharan Africa:  
Kenya, Malawi, and Zambia

**R**apid and unplanned urban growth creates significant governance challenges, particularly in Sub-Saharan Africa, which is urbanizing faster than any other region of the world. Yet, our understanding of governance in the face of urbanization is limited and needs further investigation. In this project, GLD explores governance in the major cities of three rapidly urbanizing, low-income countries: Kenya, Malawi, and Zambia. By examining social institutions’ role in a multi-method inquiry, we look closer into how rules and norms governing ethnic and gender relations affect governance. This project also examines the impact of social and political institutions on the quality of governance and service provision and the inequalities based on traditional power structures of class, ethnicity, gender, and geographic location therein.

**Principal Investigator:** Ellen Lust.  
**Survey Partners:** Ubuntu Research and Rural Development Company Ltd. (Zambia), Ipsos (Kenya), and The Institute of Public Opinion and Research (Malawi).  
**Funding:** FORMAS.

FUNDING IN MILLION SEK: MSEK:  
**9,1**



From Revenge to Forgiveness:  
Strengthening Durable Peace in  
Post-Conflict Societies

**F**ollowing conflicts, states need to re-establish themselves as legitimate arbiters of processes to bring former enemy collaborators to justice. This project develops and tests a novel framework integrating political science theories of legitimacy with psychological theories of forgiveness, feelings of (in)justice, and desire for revenge in Iraq. Iraq has endured a series of civil conflicts culminating in the recent confrontation with the Islamic State in Iraq and Syria (ISIS). This project employs innovative tools to identify both the subnational drivers of violent resentment towards the state and the drivers of reconciliation. Further, it provides policymakers with the information necessary to design successful strategies for reconciliation, re-establishment of state legitimacy, and lasting peace across different types of communities. The project is a collaborative effort between GLD, Mikael Bang Peterson at Aarhus University, and Kristin Fabbe at Harvard University.

**Principal Investigator:** Kristen Kao.  
**Funding:** 3.2M SEK, Riksbankens Jubileumsfond, 396 000 SEK, The Folke Bernadotte Academy.

FUNDING IN MILLION SEK:  
**3,6**



To Punish or to Pardon? Attitudes  
Towards Justice and Reintegration for  
Europeans who Cooperated with the  
Islamic State

**T**housands of European citizens who joined the Islamic State (IS) now seek repatriation. This project seeks to understand the conditions under which Europeans will accept the return of compatriot IS collaborators into their communities. How does variation in collaborator identity characteristics, the type of collaboration engaged in, or expressed remorse affect prospects for reintegration? Can state-imposed punishments or rehabilitative measures contribute to reconciliation? How do gaps between the perception of appropriate punishments and what the state decides affect desires for retribution and state legitimacy? This project will run online surveys in Sweden with embedded conjoint experiments to answer these questions. In this age of international terrorism, this research provides policymakers with information needed to create safe, secure, and inclusive societies.

**Principal Investigator:** Kristen Kao.  
**Funding:** Lundgrens Vetenskapsfond.

FUNDING IN SEK:  
**66 000**



# GLD DATA IN NUMBERS

2021 marked the first full year for GLD Data and resulted in numerous achievements. We programmed and fielded 8 surveys in 5 countries, strengthening collaborations with previous survey implementation partners and developing new relationships with others. In addition, we assisted with creating 2 policy briefs, the Covid-19 report and numerous publications. We also implemented new methods and techniques into GLD’s research, including multilevel modeling and an audio-based survey experiment. Lastly, we developed and implemented various processes and platforms to streamline the daily work at GLD, including formalizing the data sharing process, creating automated trackers for intern assignments, and other administrative tools.

The primary goal of GLD Data in 2022 is to continue to provide high quality support to GLD researchers. We are excited to see how the team and its work will evolve in 2022.

10+  
PUBLICATIONS

8  
SURVEYS IN  
5 COUNTRIES

4  
TEAM  
MEMBERS

3  
DATASETS,  
TOTALING 4 527  
OBSERVATIONS  
EACH WITH  
APPROXIMATELY  
200 VARIABLES

2  
NEW METHODS

2  
POLICY  
BRIEFS

1  
REPORTS

1  
DATA INTERNS





# OUR WORK

In this section, we have collected output from 2021. You can find all GLD presentations, publications, reports, events, the GLD Working Paper Series, episodes of Governance Uncovered, policy briefs, Short-Term Grant awardees, and more in the following pages. If you wish to access the full versions of the following material, please visit [www.gld.gu.se](http://www.gld.gu.se) where we have published all our work.

## GLD WORKSHOPS 2021

### Spring Workshop Series (Internal)

**Date:** Spring 2021 (February 4 – April 29).  
**Location:** Department of Political Science, University of Gothenburg (Zoom).

This series brought GLD affiliates together in sessions to help each other. Each workshop aimed to share findings based on GLD data and workshop papers' findings into well-crafted articles.

#### Participants:

**Adam S. Harris**, University College London.  
**Boniface Dulani**, Chancellor College.  
**Cecilia Ahsan Jansson**, University of Gothenburg.  
**Ellen Lust**, University of Gothenburg.  
**Erica Ann Metheney**, University of Gothenburg.  
**Frida Boräng**, University of Gothenburg.  
**Karen E. Ferree**, University of California, San Diego.  
**Kate Baldwin**, Yale University.  
**Kristen Kao**, University of Gothenburg.  
**Lauren Honing**, Boston College.  
**Marcia Grimes**, University of Gothenburg.  
**Melanie Philips**, University of California, Berkeley.  
**Prisca Jöst**, University of Gothenburg.  
**Salma Mousa**, Yale University.

### Developing Survey Measures of Punishment, Revenge, and Forgiveness in Post-Conflict Settings

**Date:** February 19, 21, and 23.  
**Location:** Department of Political Science, University of Gothenburg (Zoom).

#### Participants:

**Alexandra Hartman**, University College London.  
**Dan Posner**, University of California, Los Angeles.  
**Everett Worthington**, Virginia Commonwealth University.  
**Fotini Christia**, Massachusetts Institute of Technology.  
**James Gibson**, Washington University.  
**Karin Dyrstad**, Norwegian University of Science and Technology.  
**Mara Revkin**, Georgetown University.  
**Marsin Al-Shamari**, Massachusetts Institute of Technology.

**86** PRESENTERS

**65** UNIVERSITIES

**31** WORKSHOPS

**20** COUNTRIES

**Michael McCullough**, University of California, San Diego.  
**Muslih Irwani**, American University of Iraq.  
**Roger Petersen**, Massachusetts Institute of Technology.  
**Salma Mousa**, Yale University.





## Gender and Politics in the Middle East and North Africa: A Decade after the Arab Uprisings

**Date:** May 6, 7, 20, & 21, 2021.  
**Location:** Department of Political Science, University of Gothenburg (Zoom).

This workshop examined gender and politics across regimes and cultural contexts in the MENA region, and was organized by researchers and staff from GLD, the Quality of Government (QoG) Institute, and the Working Group on Gender and Politics in the MENA. It brought together 43 international, interdisciplinary scholars to discuss cutting-edging research.

- Participants**  
**Aili Tripp**, University of Wisconsin-Madison.  
**Alexandra Blackman**, Cornell University.  
**Aytuğ Şaşmaz**, Harvard University.  
**Carla Abdo-Katsipis**, Wesleyan University.  
**Carolyn Barnett**, Princeton University.  
**Carrie Reiling**, Washington College.  
**Ebtesam Barakat**, Zefat Academic College/Bar-Ilan University/Hebrew University of Jerusalem.  
**Ellen Lust**, University of Gothenburg.  
**Gamze Cavdar**, Colorado State University.  
**Hind Ahmed Zaki**, University of Connecticut.  
**Isis Nusair**, Denison University.  
**Julia Clark**, University of California, San Diego.  
**Kate Ellis**, American University in Cairo.  
**Kelsey Norman**, Baker Institute, Rice University.  
**Lena Wägerud**, University of Gothenburg.  
**Lihi Ben Shitrit**, University of Georgia.  
**Lindsay Benstead**, Portland State University.

- Mahmoud Jaraba**, Erlangen Centre for Islam and Law in Europe (EZIRE)/Max Plank Institute.  
**Maria Frederika Malmström**, Lund University.  
**Maria Holt**, University of Westminster.  
**Marie Carlson**, University of Gothenburg.  
**Marwa Shalaby**, University of Wisconsin-Madison.  
**Meriem Aissa**, Rutgers University.  
**Monica Komer**, University of Wisconsin-Madison.  
**Mounira M. Charrad**, University of Texas at Austin.  
**Nadje Al-Ali**, Brown University.  
**Nermin Allam**, Rutgers University.  
**Ora Szekely**, Clark University.  
**Patrick Marius Koga**, University of California, Davis.  
**Pinar Dokumaci**, Queen’s University.  
**Rita H. Giacaman**, Birzeit University.  
**Rola El-Husseini**, Lund University.  
**Sa’ed Atshan**, Swarthmore College/University of California, Berkeley.  
**Selin Cagatay**, University of Gothenburg and Central European University.  
**Simona Sharoni**, Merrimack College.  
**Suad Joseph**, University of California, Davis.  
**Summer Forester**, Carleton College.  
**Tanya Zion-Waldoks**, Hebrew University of Jerusalem.  
**Tommaso Milani**, University of Gothenburg.  
**Tuba Kanci**, Kocaeli University.  
**Valentine M. Moghadam**, Northeastern University.  
**Yasmin Chilmeran**, Swedish Institute of International Affairs.  
**Yuree Noh**, Rhode Island College / Harvard Kennedy School.

## Fall Workshop Series: People Governance and Space

Due to Covid-19, GLD held its Fourth Annual Conference via Zoom. Every second week between September 1 and November 23, a workshop took place with researchers from different universities to presenting and discussing findings relating to this series’ theme: Governance, People, and Space. The conference aimed to examine how governance mechanisms and outcomes vary across differences in people (e.g., gender, ethnicity) and space (e.g., neighborhoods, villages/cities, and other spatial contexts). In total, we held seven workshops with 21 different presenters from 19 different universities.

- Presenters**  
**Adam Auerbach**, American University.  
“Petitioning Patrons: Community Claims and Political Responsiveness in Urban India.”  
**Aksel Sundström**, University of Gothenburg.  
“Droughts and Trust in Africa.”  
**Ala’ Alrababa’h**, ETH Zürich.  
“The Dynamics of Refugee Return: Syrian Refugees and Their Migration Intentions.”  
**Alicia Cooperman**, Texas A&M University.  
“Bloc Voting for Electoral Accountability.”  
**Andrea Benjamin**, University of Oklahoma.  
“Demographics Are Not Destiny: Revisiting Political Representation in Cities.”  
**Andy Harris**, New York University, Abu Dhabi.  
“A Booth of One’s Own: Female-Only Polling Stations and Turnout in Pakistan.”  
**Chrispin Mphande**, Mzuzu University.  
“Understanding Land Governance among the Tonga of Nkhata Bay: Can the New Land Law Work?”  
**Daniel Appiah**, University of Ghana Business School.  
“Customary Land Administration Reforms in Ghana: Why Accountability Reforms in Akyem Abukwa State Succeeded Under Colonialism but Failed in the Postcolonial Era.”  
**Frazer Macdonald Hay**, University of Edinburgh.  
“Everyday Remainder and Reminders of Violence.”  
**Hanne Van Capellen**, University of Antwerp.  
“Moving Jobs: Labour Dynamics, Migration and Urbanization in Kagera, Tanzania.”  
**Janica Magat**, Texas A&M University.



- “Formalization, Tax Appeals, and Social Intermediaries: Evidence from a Field Experiment in Lagos, Nigeria.”  
**Joe Mlenga**, The Polytechnic, University of Malawi.  
“When the Big Foot of Governance Politics Tramples Common Sense in Deprived Disaster-Prone Areas in Malawi.”  
**Lama Mourad**, Carleton University.  
“Local Politics Beyond Borders: The Diffusion and Anti-Syrian Curfews in Lebanon.”  
**Lindsay Benstead**, Portland State University.  
“Al Shabaab’s Ethicized Governance Strategy: Evidence from Five Somali Localities.”  
**Mara Revkin**, Georgetown University.  
“How Does Subnational Variation in Oppression Affect Attitudes toward Police? Evidence from a Natural Experiment in Iraq”  
**Michael Seese**, WZB Berlin Social Science Center.  
“Exiting Anarchy: Institutional Correlates of Civilian Welfare in 2012 Mogadishu.”  
**Nico Ravanilla**, University of California, San Diego.  
“Social Accountability in a Patronage Democracy: A Field Experiment on Members of Congress in the Philippines.”  
**Nora Stel**, Radboud University Nijmegen.  
“Hybrid Political Order and the Politics of Uncertainty Refugee Governance in Lebanon.”  
**Rose Camille Vincent**, ETH Zurich.  
“Mining and Quality of Public Services: The Role of Local Governance and Decentralization.”  
**Steven Brooke**, University of Wisconsin-Madison, and  
**David Buckley**, University of Louisville.  
“Parish-Based Responses to the Philippine Drug War.”



## Guest Seminar with Benjamin Schüetze

**Date:** September 14.  
**Location:** The Department of Political Science, University of Gothenburg (Zoom).

Benjamin presented his book – Promoting Democracy, Reinforcing Authoritarianism – discussing how US and EU democracy promotion reinforces authoritarianism rather than promotes democracy in Jordan. Benjamin’s research interest lies in authoritarian practices and the politics of intervention. Exploring the often- contradictory effects of external interventions in the Middle East and North Africa, his work is at the intersection of international relations, Middle Eastern politics, critical security studies, and transregional studies. This seminar was co-hosted with The Centre for European Research at the University of Gothenburg (CERGU).



## Policy Roundtable: Local Elections in Morocco

**Date:** October 25.  
**Location:** The Department of Political Science, University of Gothenburg (Zoom).

Morocco has one of the most advanced local governance systems in the Middle East and North Africa (MENA) region. Despite its monarchical structure, the regime has held local elections since the 1960s, and local councils play an important role in providing services and addressing the everyday needs of Moroccan citizens throughout the state. We invited experts to discuss the results of the most recent elections, implications for local governance, and the impact of autocratic rule on shaping policy outcomes at the subnational level.

**Panelists:**  
**Francesco Colin**, Erasmus University Rotterdam.  
**Romain Ferrali**, Aix Marseille School of Economics.  
**Saloua Zerhouni**, Mohammed V University in Rabat.

**Chair:**  
**Marwa Shalaby**, University of Wisconsin-Madison.

## Work-in-Progress Workshops

**Date:** Fall 2021 (September 9 – November 18).  
**Location:** The Department of Political Science, University of Gothenburg (Zoom).

The GLD Work-in-Progress Virtual Workshop Series was designed to help scholars with ongoing papers or projects by providing feedback, suggestions, and advice during a one-hour-long workshop. These workshops were open to all governance and local development scholars, independent of earlier association with GLD.

**Presenters:**  
**Alex Oguso**, University of Nairobi, and Kenya Revenue Authority.  
**Blair Read**, Massachusetts Institute of Technology.  
**Jacob Cassani**, University College London.  
**Matthias Krönke**, University of Cape Town.  
**Tanu Kumar**, College of William and Mary.  
**Tugba Bozcaga**, Harvard University.





# GOVERNANCE UNCOVERED

## PODCAST EPISODES 2021

**EPISODE 23, JANUARY 2021**  
**Post-Reconciliation in Iraq**

*Kristen Kao*  
GLD’s Senior Research Fellow Kristen Kao talks about her post-conflict reconciliation in Iraq. Kristen tells us about her study on the drivers of forgiveness versus revenge among diverse groups in Iraq and how her research could help promote long-term peace.

**EPISODE 24, MARCH 2021**  
**Tunisia’s 2015-17 Municipal Boundary Reforms**  
*Intissar Kherigi*

Intissar Kherigi, a PhD student at Sciences Po Paris and GLD Collaborating Researcher, tells us about Tunisia’s 2015-17 municipal boundary reforms. After the Arab uprisings in 2011, Tunisia saw changes in local governance and the adoption of a new constitution mandating the decentralization of power, leading the government to reorganize the country’s municipal boundaries.

**EPISODE 25, APRIL 2021**  
**Governance and Politics of Oman**  
*Ahmed al Mukhaini*

In January 2021, Oman’s Sultan Haitham declared an end to the former succession system and proclaimed a new crown prince and Basic Law of the State to allow for the modernization and transformation of the Gulf nation’s economic, political, and social structures. Ahmed al Mukhaini, Independent Scholar and GLD Collaborating Researcher, explains Oman’s political system and gives us unique insights into the New Basic Law and what it means for Oman.



**EPISODE 26, APRIL 2021**  
**Safer Field Research in the Social Sciences**  
*Isabell Schierenbeck and Jannis Grimm*  
The handbook on Safer Field Research in the Social Sciences is discussed with two authors, Isabell Schierenbeck (University of Gothenburg) and Jannis Grimm (Freie Universität Berlin). We talk about the need for available guidance on preparing and conducting safe research within the social sciences and the new challenges to conducting safe research that Covid-19 has brought.

**EPISODE 27, MAY 2021**  
**Covid-19 Challenges in India’s “Slum Settlements”**  
*Adam Auerbach and Tariq Thachil*  
Adam Auerbach and Tariq Thachil tell us about COVID-19 challenges in India’s so-called “slum settlements.” They argue that the service delivery landscape is increasingly centralized, and the lack of property rights in slum settlements shapes relations between the citizens and the state. How do settlement leaders cope with COVID-19?

**EPISODE 28, JUNE 2021**  
**The Politics of Citizens’ Complaints in Rural India**  
*Gabrielle Kruks-Wisner*  
Guest Gabrielle Kruks-Wisner, Assistant Professor of Politics and Global Studies at the University of Virginia, talks about her research on citizenship practices and local governance, with a regional focus on India. We discuss the problems that citizens face in Northern rural India, a setting noted for variable public administration and often callous treatment of citizens by officials.



**EPISODE 29, AUGUST 2021**  
**The Rights of Married Women in Syria**  
*Taima Al Jayoush*  
Taima Al Jayoush is a human rights and international law lawyer and a member of the Bar of Quebec, a legal counsel in Syrian legislation based in Montreal. She talks to us about women’s rights in Syria and the impact of the civil war, more specifically regarding the new family law and the role of Sharia in marriage contracts.

**EPISODE 30, SEPTEMBER 2021**  
**Dimension of Healthcare Quality in Lebanon**  
*Melani Cammett*  
Melani Cammett, Clarence Dillon Professor of International Affairs and chair of the Harvard Academy of International and Area Studies, discusses healthcare quality in Lebanon, both within the Lebanese population and healthcare received by Syrian refugees. What social and political factors regulate where citizens seek care, and what role do international partnerships play?

**EPISODE 31, OCTOBER 2021**  
**The Military Coup in Sudan**  
*Liv Tønnessen*  
In this month’s Governance Uncovered, we talk to the political scientist Liv Tønnessen about the recent military coup in Sudan and the economic, cultural, and political events leading up to it. Liv is a senior researcher at CMI and Director of the Center on Law and Social Transformation. She has extensive experience in the Middle East and Northern Africa, with long-term stays in Sudan, Lebanon, and Syria. Liv has specialized in Sudanese politics for more than a decade and has conducted extensive fieldwork there.



**EPISODE 32, NOVEMBER 2021**  
**Local Politics and Taliban Takeover in Afghanistan**  
*Jennifer Brick Murtazashvili*  
Joining us in this episode to talk about the Taliban takeover in Afghanistan is Jennifer Brick Murtazashvili - Founding Director of the Center for Governance and Markets and Associate Professor at the Graduate School of Public and International Affairs at the University of Pittsburgh. Jen discusses how the Taliban have been received after their takeover in August 2021. What has changed since the former Taliban rule? And how much do we really know?

**EPISODE 33, DECEMBER 2021**  
**Bogazici’s Struggle for Independence**  
*Mine Eder*  
Mine Eder and Ellen Lust discuss Bogazici University’s struggle to maintain academic independence since Turkish President Erdogan decided to appoint the University’s Rector directly. Mine is a Professor in the Department of Political Science and International Relations at Bogazici University and a faculty member in the collectively governed movement resisting the Turkish government’s encroachment.

**Governance Uncovered: Local Politics and Development is available on iTunes, Soundcloud, and Spotify.**



PUBLICATIONS

PEER-REVIEWED ARTICLES

**Benstead, Lindsay J., and Van Lehman, Daniel. (2021).** "Two Classes of 'Marriage': Race and Sexual Slavery in Al-Shabaab Controlled Southern Somalia," *The Journal of the Middle East and Africa*, Vol. 12, Issue 4, pp. 385–403.

**Benstead, Lindsay. J; Muriaas, Ragnhild and Wang, Vibeke. (2021).** "Why Do Gender Reform Endorsements Succeed or Fail? Social Hierarchy and Messenger Intrusiveness," *Social Politics*.

**Dulani, Boniface; Harris, Adam; Lust, Ellen; Ferree, Karen E; Kao, Kristen; Jansson, Cecilia Ahsan and Metheney, Erica Ann. (2021).** "Elections in the Time of Covid-19: The Triple Crises Around Malawi's 2020 Presidential Elections," *Journal of Elections, Public Opinion, and Parties*, Vol. 31, pp. 56–68.

**Dulani, Boniface; Rakner, Lise; Benstead, Lindsay and Wang, Vibeke. (2021).** "Do Women Face a Different Standard? The Interplay of Gender and Corruption in the 2014 Presidential Elections in Malawi," *Women's Studies International Forum*, Vol. 88.

**Ferree, Karen; Harris, Adam; Dulani, Boniface; Kao, Kristen; Lust, Ellen and Metheney, Erica. (2021).** "Stigma, Trust, and Procedural Integrity: Covid-19 Testing in Malawi," *World Development*, Vol. 141, Article No. 105351.

**Ferree, Karen E; Gibson, Clark C and Long, James D. (2021).** "Mixed records, complexity, and ethnic voting in African Elections," *World Development*, Vol. 141, Article No. 105418.

**Gowokani Chijere, Chirwa; Dulani, Boniface; Sithole, Lonjezo; Chunga, Joseph; Alfonso, Witness and Tengtenga, John. (2021).** "Malawi at the Crossroads: Does the Fear of Contracting COVID- 19 Affect the Propensity to Vote?" *European Journal of Development Research*, Vol. 34, pp. 409–431.

**Kao, Kristen., and Revkin, Mara. (2021).** "Retribution or Reconciliation? Post-Conflict Attitudes toward Enemy Collaborators," *American Journal of Political Science*.

**Miquel, Pellicer; Wegner, Eva; Benstead, Lindsay J and Lust, Ellen. (2021).** "Poor People's Beliefs and the Dynamics of Clientelism," *Journal of Theoretical Politics*, Vol. 33, Issue 3, pp. 300–332.

BOOK CHAPTERS

**Benstead, Lindsay J. (2021).** "Taking One for the Team: Islamist Parties and Women's Representation in Morocco," in Cammett, Melani and Jones Luong, Pauline (eds.) *The Oxford Handbook on Politics in Muslim Societies*. Oxford: Oxford University Press, pp. 827–852.

**Benstead, Lindsay J. (2021).** "The Impact of Poverty and Corruption on Educational Quality in Tunisia," in Alaoui, Hicham and Springborg, Robert (eds.) *The Political Economy of Education in the Arab World*. Boulder, CO: Lynne Rienner Publisher, pp. 103–125.

**Carlitz, Ruth and Lust, Ellen. (2021).** "Governance Beyond the State: Social Institutions and Service Delivery," in Bågenholm, Andreas; Bauhr, Monika; Grimes, Marcia and Rothstein, Bo (eds.) *The Oxford Handbook of the Quality of Government*. Oxford: Oxford University Press, pp. 620–638.

**Dionne, Kim Yi; Dulani, Boniface and Fischer, Sarah. (2021).** "Pandemic Amidst Political Crisis: Malawi's Experience with and Response to COVID-19," in Greer, Scott L.; King, Elizabeth; Peralta-Santos, André and Massard da Fonseca, Elize (eds.) *Coronavirus Politics: The Comparative Politics and Policy of COVID-19*. Michigan, USA: University of Michigan Press, pp. 541–559.

**Dulani, Boniface; Benstead, Lindsay; Muriaas, Ragnhild L and Wang, Vibeke. (Forthcoming).** "Does Gender Matter in Evaluations of Chiefs' Performance?" in Dionne, Kim and Chiweza, Asiyati (eds.) *Traditional Governance in Malawi*.

**Kao, Kristen; Lust, Ellen and Okar, Gibran. (2021).** "Historical Legacies, Social Cleavages, and Support for Political Islam," in Cammett, Melani and Jones Luong, Pauline (eds.) *The Oxford Handbook of Politics in Muslim Societies*. Oxford: Oxford University Press.

REPORTS

**Developing a Locally Rooted Approach to Covid-19 Response Ahsan Jansson, Cecilia; Bergman, Jennifer; Hinfelaar, Marja; Lust, Ellen; Metheney, Erica Ann. (2021).** "Life Changes and Fears." Drawing on data from: Lust, Ellen (PI); Ahsan Jansson, Cecilia; Hinfelaar, Marja and Metheney, Erica Ann. "The Second GLD-SAIPAR Covid-19 Survey in Zambia." *The Program on Governance and Local Development, University of Gothenburg*.

**Ahsan Jansson, Cecilia; Bergman, Jennifer; Hinfelaar, Marja; Lust, Ellen; Metheney, Erica Ann. (2021).** "Community Restrictions." Drawing on data from: Lust, Ellen (PI); Ahsan Jansson, Cecilia; Hinfelaar, Marja and Metheney, Erica Ann. "The Second GLD-SAIPAR Covid-19 Survey in Zambia." *The Program on Governance and Local Development, University of Gothenburg*.

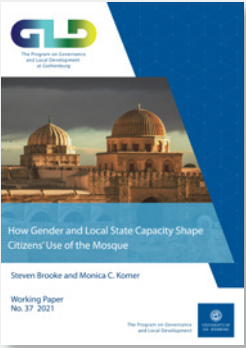
**Ahsan Jansson, Cecilia; Bergman, Jennifer; Hinfelaar, Marja; Lust, Ellen and Metheney, Erica Ann. (2021).** "Needs and Assistance." Drawing on data from: Lust, Ellen (PI); Ahsan Jansson, Cecilia; Hinfelaar, Marja; Metheney, Erica Ann. "The Second GLD-SAIPAR Covid-19 Survey in Zambia." *The Program on Governance and Local Development, University of Gothenburg*.

**Ahsan Jansson, Cecilia; Bergman, Jennifer; Hinfelaar, Marja; Lust, Ellen and Metheney, Erica Ann. (2021).** "Social Challenges to Covid-19 Precautions." Drawing on data from: Lust, Ellen (PI); Ahsan Jansson, Cecilia; Hinfelaar, Marja; Metheney, Erica Ann. "The Second GLD-SAIPAR Covid-19 Survey in Zambia." *The Program on Governance and Local Development, University of Gothenburg*.

**Ahsan Jansson, Cecilia; Dulani, Boniface; Ferree, Karen; Harris, Adam; Kao, Kristen; Lust, Ellen and Metheney, Erica Ann. (2021).** "Covid-19 Needs and Assistance." IPOR. Drawing on data from: Lust, Ellen (PI); Ahsan Jansson, Cecilia; Hinfelaar, Marja; Metheney, Erica Ann. (2020). "The Second GLD-SAIPAR Covid-19 Survey in Zambia." *The Program on Governance and Local Development, University of Gothenburg*.

**Ahsan Jansson, Cecilia; Bergman, Jennifer; Bjurnevall, Sara; Dulani, Boniface; Ferree, Karen; Fischer Madsen, Lucas; Harris, Adam; Hinfelaar, Marja; Kao, Kristen; Lust, Ellen and Metheney, Erica Ann. (2021).** "Fears, Vulnerabilities, and Precautions over Covid-19: A Report on Citizens' Experiences in Malawi and Zambia." Edit: Shaber-Twedt, Rose. *The Program on Governance and Local Development, University of Gothenburg*.

GLD WORKING PAPERS



**Brooke, Steven and Komer, Monica C. (2021).** "How Gender and Local State Capacity Shape Citizens' Use of the Mosque," *The Program on Governance and Local Development Working Paper* No. 37, University of Gothenburg.



**Kherigi, Intissar. (2021).** "Municipal Boundaries and the Politics of Space in Tunisia," *The Program on Governance and Local Development Working Paper* No. 38, University of Gothenburg.



**Marschall, Melissa and Unal, Saadet Konak. (2021).** "Media Bias, Kurdish Repression, and the Dismantling of Local Democracy in Turkey," *The Program on Governance and Local Development Working Paper* No. 39, University of Gothenburg.



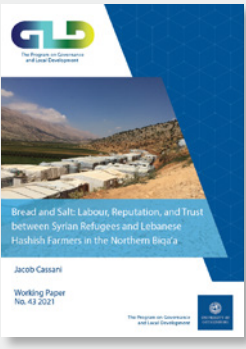
**Mehmood, Sultan. (2021).** "The Impact of Presidential Appointment of Judges: Montesquieu or the Federalists?" *The Program on Governance and Local Development Working Paper* No. 40, University of Gothenburg.



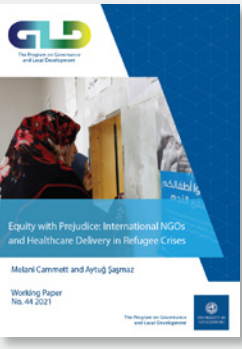
**Revkin, Mara and Kao, Kristen. (2021).** "How Does Punishment Affect Reintegration? Evidence from Islamic State' Collaborators' in Iraq," *The Program on Governance and Local Development Working Paper* No. 41, University of Gothenburg.



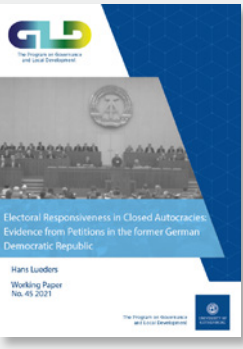
**Blackman, Alexandra Domike; Clark, Julia and Şaşmaz, Aytug. (2021).** "Local Political Priorities during Tunisia's First Democratic Municipal Elections," *The Program on Governance and Local Development Working Paper* No. 42, University of Gothenburg.



**Cassani, Jacob. (2021).** "Bread and Salt: Labour, Reputation, and Trust between Syrian Refugees and Lebanese Hashish Farmers in the Northern Biqa'a," *The Program on Governance and Local Development Working Paper* No. 43, University of Gothenburg.



**Cammett, Melani and Şaşmaz, Aytug. (2021).** "Equity with Prejudice: International NGOs and Healthcare Delivery in Refugee Crises," *The Program on Governance and Local Development Working Paper* No. 44, University of Gothenburg.



**Lueders, Hans. (2021).** "Electoral Responsiveness in Closed Autocracies: Evidence from Petitions in the former German Democratic Public," *The Program on Governance and Local Development Working Paper* No. 45, University of Gothenburg.



GLD WORKING PAPERS



**Mechkova, Valeriya. (2021).** “Electoral Responsiveness in Closed Autocracies: Evidence from Petitions in the former German Democratic Public,” *The Program on Governance and Local Development* Working Paper No. 46, University of Gothenburg.



**Yasun, Salih. (2021).** “Co-Partisanship with Mayors and Citizen Trust in Local Governance,” *The Program on Governance and Local Development* Working Paper No. 49, University of Gothenburg.



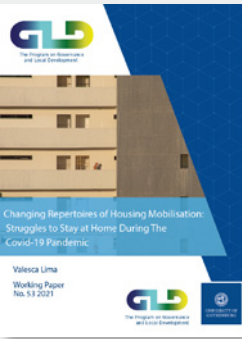
**Brooke, Steven and Bukley, David T. (2021).** “Parish-Based Responses to the Philippine Drug War,” *The Program on Governance and Local Development* Working Paper No. 52, University of Gothenburg.



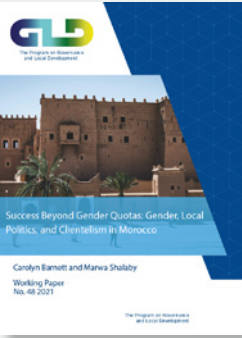
**Shayo, Deodatus Patrick. (2021).** “Citizen Participation in Local Government Elections in the Age of Crowdsourcing: Explorations and Considerations in Tanzania,” *The Program on Governance and Local Development* Working Paper No. 47, University of Gothenburg.



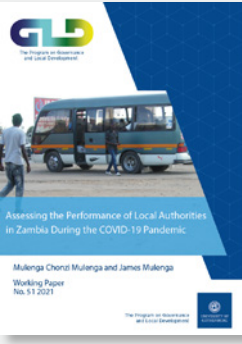
**Phan, Ngoc. (2021).** “Explaining the Resilience of Single-Party Regimes: Centralized,” *The Program on Governance and Local Development* Working Paper No. 50, University of Gothenburg.



**Lima, Valesca. (2021).** “Changing Repertoires of Housing Mobilisation: Struggles to Stay at Home During the Covid-19 Pandemic,” *The Program on Governance and Local Development* Working Paper No. 53, University of Gothenburg.



**Barnett, Carolyn and Shalaby, Marwa. (2021).** “Success Beyond Gender Quotas: Gender, Local Politics, and Clientelism in Morocco,” *The Program on Governance and Local Development* Working Paper No. 48, University of Gothenburg.



**Mulenga, Chonzi Mulenga and Mulenga, James. (2021).** “Assessing the Performance of Local Authorities in Zambia during the Covid-19 Pandemic,” *The Program on Governance and Local Development* Working Paper No. 51, University of Gothenburg.



**Kumar Singh, Mudit. (2021).** “Politics and Community Narratives of Participation in Local Governance of Rural India,” *The Program on Governance and Local Development* Working Paper No. 54, University of Gothenburg.

POLICY BRIEFS

In 2021, we began producing policy briefs on selected work to increase our engagement with the policy world. These are one-two pages long summaries of the most key, policy-relevant findings of a paper, report, or project. The policy briefs are free to share among your networks and stakeholders you believe would find the work interesting.

“Facilitating Crowdsourcing and Citizen Participation in Local Elections through Digital Tools.” **Author: Shayo, Deodatus Patrick. Edit: Bjurenvall, Sara and Shaber-Twedt, Rose.** *The Program on Governance and Local Development at the University of Gothenburg*, GLD Policy Brief No.1, August 2021.

“Governing Municipal Spaces: The Importance of Addressing Socio-logical Factors in Boundary Reform.” **Author: Kherigi, Intissar. Edit: Bjurenvall, Sara and Shaber-Twedt, Rose.** *The Program on Governance and Local Development at the University of Gothenburg*, GLD Policy Brief No.2, August 2021.

“Knowledge as Preventor of Disease Stereotyping – Evidence from Covid-19 in Malawi and Zambia.” **Authors: Ahsan Jansson, Cecilia; Dulani, Boniface; Ferree, Karen E.; Harris, Adam S.; Kao, Kristen; Lust, Ellen and Metheney, Erica Ann. Edit: Bjurenvall, Sara and Shaber-Twedt, Rose.** *The Program on Governance and Local Development at the University of Gothenburg*, GLD Policy Brief No.3, August 2021.

“Understanding Vaccine Hesitancy in Malawi.” **Author: Ferree, Karen E. Edit: Bjurenvall, Sara and Shaber-Twedt, Rose.** *The Program on Governance and Local Development at the University of Gothenburg*, GLD Policy Brief No. 4, September 2021.

“Local Councils: Representing Citizen Interests.” **Authors: Blackman, Alexandra Domike; Clark, Julia and Şaşmaz, Aytuğ. Edit: Bjurenvall, Sara and Shaber-Twedt, Rose.** *The Program on Governance and Local Development at the University of Gothenburg*, GLD Policy Brief No. 5, October 2021.

“Policy Roundtable – Moroccan Elections.” **Authors: Bergman, Jennifer; Lust, Ellen and Shaber-Twedt, Rose.** *The Program on Governance and Local Development at the University of Gothenburg*, GLD Policy Brief No. 6, October 2021.

Policy Brief  
No. 5, October 2021

Local Councils: Representing Citizen Interests

**Research shows that:**

Representation of citizen priorities at the local level is crucial for democratic consolidation.

Demographics influence how both citizens and political candidates prioritize local development needs, but these differences based on gender and age are limited.

There are significant gaps in citizen and political candidate priorities, particularly over unemployment and security issues.

**Bringing the government closer to the people**

The 2018 Tunisian local elections led to more inclusive representation at the local level. Furthermore, research shows that women and younger citizens often agreed with the priorities of female and youth candidates, respectively. For instance, both female citizens and candidates were more likely to prioritize waste management and the environment than their male counterparts, while both youth and youth candidates were more likely to prioritize unemployment issues. There is also a significant rural-urban divide among citizens and candidates. For example, those in rural municipalities tend to be significantly more concerned about road construction than their counterparts in urbanized areas, particularly those in large coastal cities. However, there is a gap between citizens and candidates on issues of employment and security. Citizens tend to prioritize employment more than candidates, while candidates prioritize security more than citizens. One reason for this imbalance is that municipal candidates do not see employment as their responsibility due to budgetary constraints, unclear mandates for municipalities, and the general selection of individuals of higher socioeconomic status than average into political candidacy.

**An optimistic path**

The study finds general agreement between the local priorities of citizens and candidates. It also demonstrates that individual attributes (e.g., gender, age) and contextual factors (e.g., urban-rural contexts) shape political priorities. Policies should continue to address the socially disadvantaged as they are at the greatest risk of being unrepresented among the social class of politicians. Moreover, there is a need to further empower local councils to implement development plans that reflect local demands and facilitate cooperation between different levels of government.

**Municipal governance and accountability**

Tunisia has a long history of municipal governance. However, as with elsewhere in the Middle East, Tunisia has suffered from an absence of inclusive political institutions at the local level. Non-competitive elections held under colonial and post-colonial rule, council dominance of older male politicians, and the exclusion of about one-third of the population living in areas not governed by elected municipal councils have undermined the councils' abilities to channel citizens' demands to policymakers. However, prompted by the Tunisian Revolution in 2010, Tunisia held its first local democratic election in May 2018. This historical event led to the expansion of municipal systems to rural areas and, thanks to electoral quotas for age and gender, created more diverse and inclusive local councils.

To access the full paper, see:  
Blackman, Alexandra Domike; Clark, Julia, and Şaşmaz, Aytuğ. (2021), "Local Political Priorities during Tunisia's First Democratic Municipal Elections," *The Program on Governance and Local Development Working Paper No. 42*, University of Gothenburg. Available At: <https://gld.gu.se/read/2165/gld-working-paper-42.pdf>

Policy Brief  
No. 4, September 2021

Understanding Vaccine Hesitancy in Malawi

Group	Unlikely to get free Covid-19 vaccine if offered (%)
Women	~40%
Men	~20%
Rural	~30%
Urban	~20%
Other	~30%





GLD EJOURNAL

The Program on Governance and Local Development (GLD) Working Paper Series addresses diverse topics related to critical local governance issues, including service delivery, social institutions, elections, political participation, security, gender, and migration. The research published in the series features a blend of methodological approaches from researchers worldwide.

**Diversity and Social Cohesion**, *The University of Gothenburg Program on Governance & Local Development Research Paper Series*, Vol. 6.

**Local Governance and Institutions**, *The University of Gothenburg Program on Governance & Local Development Research Paper Series*, Vol. 7.

**Local Governance and Institutions**, *The University of Gothenburg Program on Governance & Local Development Research Paper Series*, Vol. 8.

**Forced Migration**, *The University of Gothenburg Program on Governance & Local Development Research Paper Series*, Vol. 9.

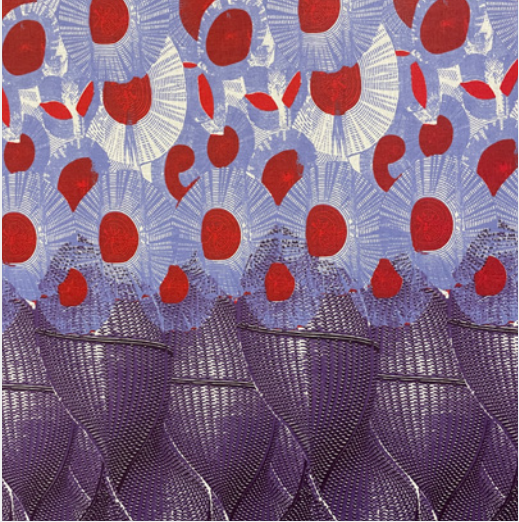
**Local Participation and Representation**, *The University of Gothenburg Program on Governance & Local Development Research Paper Series*, Vol. 10.

**Local Governance in Tunisia**, *The University of Gothenburg Program on Governance & Local Development Research Paper Series*, Vol. 11.

**Governance and Institutions**, *The University of Gothenburg Program on Governance & Local Development Research Paper Series*, Vol. 12.

**Covid-19**, *The University of Gothenburg Program on Governance & Local Development Research Paper Series*, Vol. 13.

Subscribe to our eJournal by scanning the QR-code!



OTHER PUBLICATIONS

**Benstead, Lindsay J. (2021).** "Poverty, Inequality and Corruption: Explaining Variation in Educational Quality in Tunisia," *Wilson Center’s Middle East Program*.

**Hydari, Zaid and Irgil, Ezgi. (2021).** "Venezuelans in Colombia: Syrians in Turkey 2.0," *Refugee Law Initiative Blog on Refugee Law and Forced Migration*.

**Irgil, Ezgi. (2021).** "'Exit and Voice: The Paradox of Cross-Border Politics in Mexico,' Duquette-Rury, Oakland, California: University of California Press, 2019." Book Review in *International Migration*.

**Irgil, Ezgi. (2021).** "Everyday Politics of Forced Migration: Refugees, Host Community Members, and the Local Context," (Doctoral thesis, Göteborg Studies in Politics, 168). Gothenburg: *Department of Political Science, University of Gothenburg*.

**Jöst, Prisca. (2021).** "The Political Participation of the Poor: Local Social Context and the Impact of Social Ties on the Political Engagement of Poor Individuals," (Doctoral thesis, Göteborg Studies in Politics, 167). Gothenburg: *Department of Political Science, University of Gothenburg*.

**Jöst, Prisca and Lust, Ellen. (2021).** "Social Ties, Clientelism, and the Poor's Expectations of Future Service Provision," Working Paper, UNU-WIDER. <https://www.wider.unu.edu/publication/social-ties-clientelism-and-poor%E2%80%99s-expectations-future-service-provision>

**Kao, Kristen. (2021, October 4).** "Elections Series: Iraq – Parliamentary – EGAP," EGAP. <https://egap.org/resource/elections-series-iraq-parliamentary/>

**Shalaby, Marwa; Allam, Nermin and Buttorff, Gail J. (2021).** "Leveling the Field: Gender Inequity in Academia During COVID," *PS: Political Science & Politics*.

PRESENTATIONS

2021 (sorted by date)

**Dwinger, Felix.** "Democratic Check? Incumbent Parties and Democratic Backsliding." *SPSA Online*, 6–9 January.

**Irgil, Ezgi.** "Everyday Regulations and Syrian Refugees' Encounters with State Authorities in Turkey." *Nordic Online Migration Conference*, 11–14 January.

**Lust, Ellen.** "Interventions on the Current State and Future Trends of Governance." *Reimagining Governance Nordic Roundtable (Virtual)*, UNDP, January 27.

**Lust, Ellen.** "Clientelism, Credibility and Context." *QoG Virtual Internal Conference*, 1–3 February.

**Lust, Ellen.** "Covid-19 and Elections." Co-presented with Erica Ann Metheney, Boniface Dulani, Cecilia Ahsan Jansson and Kristen Kao, *GLD Spring Workshop Series*, February 4.

**Lust, Ellen and Jöst, Prisca.** "Neighborhood Social Ties and Compliance among the Poor." *GLD Spring Workshop Series*, February 11.

**Kao, Kristen and Lust, Ellen.** "Signal of Strength? Clientelism and Voters' Expectations of Politicians' Performance in Malawi and Zambia." *GLD Spring Workshop Series*, February 25.

**Kao, Kristen and Mousa, Salma.** "Engaging Citizens in Local Governance: A Recycling Experiment in a Low Institutional Trust Context." *GLD Spring Workshop Series*, March 4.

**Kao, Kristen and Revkin, Marva.** "Retribution or Reconciliation? Post-Conflict Attitudes Toward Enemy Collaborators." *International Relations and Methods Workshop at UCLA Dep. of Political Science*, Online, March 8.

**Lust, Ellen and Jöst, Prisca.** "Neighborhood Social Context and Compliance among the Needy." *Research Seminar, University of Mannheim (Prof. Richard Traunmüller)*, March 15.

**Harris, Adam S.; Kao, Kristen; Lust, Ellen and Metheney, Erica Ann.** "ESI Paper." *GLD Spring Workshop Series*, Online, March 18.

**Lust, Ellen.** "Clientelism, Credibility, and Context." *GLD Spring Workshop Series*, Online, March 25.

**Irgil, Ezgi.** "Everyday Regulations and Syrian Store Owners' Encounters with Local State Authorities in Bursa, Turkey." *POMEPS Junior Scholars Workshop*, March 26.

**Benstead, Lindsay J.** "The Impact of Poverty and Corruption on Educational Quality in Tunisia." Book Launch, *The Woodrow Wilson Center*, April 7.

**Baldwin, Kate; Kao, Kristen and Lust, Ellen.** "How Leaders Gain Compliance Across Different Realms: Evidence from Cross-National Survey Experiments." *GLD Spring Workshop Series*, April 8.

**Kao, Kristen.** "To Punish or to Pardon? Attitudes Towards Justice and Reintegration for Europeans Who Cooperated with the Islamic State." *Development Economics Seminar Series* in the Department of Economics at the University of Gothenburg, April 8.

**Lust, Ellen.** "Historical Approaches to the Study of Middle East Politics." *Midwest Political Science Association* (Discussant), April 14.

**Ferree, Karen E; Honing, Lauren; Lust, Ellen and Phillips, Melanie.** "Land and Legibility: When do Citizens Expect Secure Property Rights in Weak States?" *GLD Spring Workshop Series*, April 22.

**Ferree, Karen E.** "Disease Threat, Stereotypes and Covid-19: An Early View from Malawi and Zambia." Co-authored with Dulani, Boniface; Harris, Adam S.; Kao, Kristen; Lust, Ellen and Metheney, Erica Ann. *GLD Spring Workshop Series*, April 29.

**Ferree, Karen E; Honing, Lauren; Lust, Ellen and Philips, Melanie.** "Green Eggs and Ham." *GLD Spring Workshop Series*, April 29.

**Benstead, Lindsay J.** "Do Women Provide More Casework? Using Elite Surveys to Explain Representation in Arab Parliaments." *GLD Gender and Politics in MENA Workshop*, May 7.

**Shalaby, Marwa.** "Discerning the Link Between Women's Substantive and Descriptive Representation Under Authoritarianism." *GLD Gender and Politics in MENA Workshop*, May 7.

**Shalaby, Marwa.** "Local Governance in the Arab World: Cases and Experiences." *Webinar in collaboration with APSN and GLD*, May 26.

**Metheney, Erica Ann.** "Introduction to QGIS for Research." *Bauhaus-Universität Weimar*, May 28.

**Kao, Kristen.** "How Does Punishment Affect Reintegration? Evidence from Islamic State 'Collaborators' in Iraq." The Scripts and Settings of Transitional Justice: Procedure, Protocol and Form, *MINERVA*, June 16.

**Baldwin, Kate; Kao, Kristen and Lust, Ellen.** "Authority and Legitimacy: Evidence from Conjoint Endorsement Experiments in Malawi and Zambia." EPSA Virtual 2021, June 25.

**Lust, Ellen.** "Clientelism, Credibility, and Context." *EPSA Virtual 2021*, June 25.

**Kao, Kristen and Lust Ellen.** "Signal of Strength? Clientelism and Voters' Expectations of Politicians' Performance in Malawi and Zambia." *EPSA Virtual 2021*, June 25.

**Jöst, Prisca and Lust, Ellen.** "Neighborhood Social Ties and Compliance among the Poor." *EPSA Virtual 2021*, June 25.

**Lust, Ellen.** "ZEPS Round 1." Webinar, August 5.

**Lust, Ellen.** "Promoting Democracy, Reinforcing Authoritarianism." *GLD CERGU Joint Seminar* (moderator), University of Gothenburg, September 14.

**Lust, Ellen.** "How Can Local Governments and Municipal Councils Increase Community Trust and Participation?" *Local Democracy Lab, Swedish International Centre for Local Democracy* (Participant), September 20.

**Lust, Ellen.** "Surveying Democracy & Governance in Africa: Substantive Findings and Methodological Advances." *IDCPPA Monthly Webinar Series*, September 21.

**Lust, Ellen.** "Everyday Choices: The Role of Competing Authorities and Social Institutions in Politics and Development." *Political Science Research Seminar*, Trinity College Dublin, September 24.

**Lust, Ellen.** "Authoritarianism: A Substantive Approach." *POMEPS Virtual Workshop* (Discussant), September 24.



- Baldwin, Kate; Kao, Kristen and Lust, Ellen.** "How Leaders Gain Compliance: Survey Experiments on Variation by Activity." The State and Traditional Governance Nexus: Empirical Evidence from Africa Panel, *APSA 2021*, September 28.
- Kao, Kristen.** "The Structure of Armed Groups." *APSA 2021* (Chair), September 29.
- Ferree, Karen; Honing, Lauren and Lust, Ellen.** "Land and Legibility: When Do Citizens Expect Property Rights to be Secure?" Territory, Politics, and Power in Africa Panel, *APSA 2021*, September 30.
- Lust, Ellen.** "Community Networks, Clientelism, and Participation." *APSA 2021* (Chair), September 30.
- Kao, Kristen; Revkin R, Marwa and Reyes, Liana.** "Limits of Legitimacy: Legal Pluralism in Iraq." *APSA 2021* (Presenters and Co-Organizers), October 2.
- Kao, Kristen.** "Conflict, Gender and Political Representation." *APSA 2021* (Chair), October 3.
- Kao, Kristen.** "Islamist Armed Conflicts, Networks and Negotiations." Research Workshop on Resolving Islamist Armed Conflicts, *The Folke Bernadotte Academy* (Discussant), October 10.
- Kao, Kristen.** "Narratives, Resistance, and Lingering Perceptions." Research Workshop on Resolving Islamist Armed Conflicts, *The Folke Bernadotte Academy* (Panellist), October 10.
- Kao, Kristen.** "Islamist Armed Conflicts in the Middle East: between legitimacy and authority." *The Folke Bernadotte Academy Research-Policy Dialogue*, October 11.
- Lust, Ellen.** "Gender and Authoritarian Politics: A Comparative Perspective." *APSA 2021* (Chair), October 1.
- Lust, Ellen.** "The Comparative Politics of the Police." *APSA 2021* (Chair), October 3.
- Lust, Ellen and Jöst, Prisca.** "Leadership, Community Ties and Participation of the Poor Evidence from Kenya, Malawi, and Zambia." Clientelism and Formal Political Institutions in Developing Countries Panel, *APSA 2021*, October 3.
- Lust, Ellen.** "Everyday Choices: The Role of Competing Authorities and Social Institutions in Politics and Development." *Centre of Development Studies Speaker Series*, Cambridge University, October 28.
- Kao, Kristen and Spehar, Andrea.** "Living in Europe: Work, Welfare, and Family." *Youth International Think Tank* at Lindholmen Visual Arena, November 23.
- Kao, Kristen and Spehar, Andrea.** "Challenges for Democracy in Post-Conflict Settings." *Youth International Think Tank* at Lindholmen Visual Arena, November 23.
- Lust, Ellen.** "The King Can Do No Wrong: Blame Games and Royal Rule in the Modern World." *Book Workshop*, Milan (Chapter Discussant), November 30.
- Lust, Ellen.** "Politics and Conflict in the Contemporary Levant." *MESA Virtual Annual Meeting* (Discussant), December 1.
- Lust, Ellen.** "Elections and Electoral Institutions in the Middle East and North Africa." *MESA Virtual Annual Meeting* (chair), December 2.
- Lust, Ellen.** "Everyday Choices: The Role of Competing Authorities and Social Institutions in Politics and Development." *Sapporo Virtual Workshop on Authoritarian Governance*, December 7.





# WHAT'S NEXT? GLD IN 2022

We hope that 2022 will be the year that we are allowed to meet in person again and arrange physical conferences. What we can be more certain about is that it will be a year full of progress. We are moving into the new year with two new research grants, the launching of the GLD Fellowship Program with 12 new fellows, and new hires in our administrative, research and data teams. It's an exciting time! To keep up to date on all the latest news, including publications, project updates, events, and opportunities, visit our website [www.gld.gu.se](http://www.gld.gu.se), and sign up for our monthly newsletter by scanning the QR code.



## UPCOMING PROJECTS

**W**e are happy to announce that GLD has received 4,417,150 SEK in funding from the Swedish Research Council for the upcoming project: *Survive, Thrive, or Deprive? Drivers and Outcomes of Resilience During the Covid-19 Pandemic in Malawi*. The project will run between 2022 and 2024 and examine why some individuals and communities respond better to crises and the longer-term effects on governance and welfare. It considers three questions: **1)** What explains when and how communities implement and enforce policies to mitigate the pandemic's negative effects? When/why does this impact poverty and inequality? **2)** How do community factors and individuals' characteristics affect how individuals manage crises? **3)** How has the pandemic altered community capital and authority?

We are also happy to announce that The Carnegie Corporation of New York has awarded 400,000 USD (3,616,500 SEK) to support *Governance and Local Development in the Middle East and North Africa*. This project runs from Jan 2022 - Dec 2023 and aims to strengthen the community of scholars working on GLD issues in the MENA, Europe, and the US, by providing capacity-building opportunities. It further aims to promote scholarly collaboration across the MENA and Europe on issues pertinent to local governance and development. Finally, it wishes to create a sustainable bridge between scholars and policy practitioners working in and/or on the MENA region, providing policymakers, practitioners, and the general public in the MENA, the US, and Europe with a better understanding of key local governance and development issues.

### LGPI TOOL

Since the early days of GLD, the project "Local Governance Performance Index" (LGPI) has been a somewhat flagship project. It was in 2015 that the first data collection took place which looked at Governance and Service Delivery in Post-Revolutionary Tunisia, funded by the Moulay Hicham Foundation and Yale University. GLD researchers then began analysis and dissemination of findings after GLD moved to Gothenburg in June and continued the LGPI data collection in Malawi, Kenya, and Zambia.

The long-term goal with this project has been to generate a database on local governance performance that can serve as a tool for other scholars, in other contexts. We are now close to reaching that goal and will in 2022 release LGPI - the database tool, a system of information gathering resulting in a new approach to the measurement, analysis, and improvement of local governance. However, instead of being an "index", we have replaced the acronym with "indicators" to present a more diverse understanding of local governance.

### POLICY ROUNDTABLE

We are planning to continue our Policy Roundtable Series throughout 2022. Briefs, recordings, and registration links can be found on our website.

### CONFERENCES

We are probably not the only one's longing for real-life meetings, where we can laugh and learn together, exchange inspiring ideas, and simply meet. GLD has two conferences currently planned for Spring 2022 at spa venues near Gothenburg (Sweden).

**May 10-11** *Gender and Politics in the MENA: A Decade after the Arab-Spring uprising*. Co-organized with Lena Wängernud and Marwa Shalaby and funded by Riksbankens Jubileums Fond.

**May 23-26** GLD's 5th Annual Conference - "*Giving and Taking: Studies on Extraction and Participation in Local Governance*." - will be held at Vann Spa, Hotel, and Conference in Brastad, Sweden. The conference aims to bring together scholars and practitioners to discuss when and how individuals participate in decision-making and contribute to public goods, and who benefits from such activities. The conference will consider the perspectives and interactions of citizens, service providers, and authorities, both within and outside the state.

### WORK-IN-PROGRESS WORKSHOP SERIES

In 2021, GLD initiated the concept "*Work-in-Progress Virtual Workshop Series*" which is designed to help scholars with ongoing papers or projects by providing feedback, suggestions, and advice during an hour-long workshop. Scholars are also encouraged to attend the other workshops to reciprocate the helpful feedback. Further information about how to attend and the series itself is available on our website.



LIST OF STAFF AND COLLABORATORS IN 2021

**Acronyms**  
AC = Annual Conference Presenter/Chair  
CR = Collaborating Researcher  
D = Director  
I = Intern  
PR = Postdoctoral Researcher  
PhD = Doctoral Student  
S = Staff  
VS = Visiting Scholar  
W = Workshop Participant  
WP = Working Paper Author

**Adam Auerbach**, American University, USA (AC)  
**Adam Harris**, University College London, U.K. (AC, CR, W)  
**Adel Daoud**, Linköping University, Sweden (CR)  
**Adilhan Adil**, University of Gothenburg, Sweden, (I)  
**Ahmed al-Mukhaini**, Independent Scholar, Oman (CR)  
**Aksel Sundström**, University of Gothenburg, Sweden (AC)  
**Ala' Alrababa'h**, ETH Zürich, USA (CR, AC)  
**Alex Oguso**, University of Nairobi and Kenya Revenue Authority, Kenya (CR, W)  
**Alexandra Blackman**, Cornell University, USA (CR, W, WP)  
**Alicia Cooperman**, Texas A&M University, USA (AC)  
**Andrea Benjamin**, University of Oklahoma, USA (AC)  
**Andrea Spehar**, University of Gothenburg, Sweden (CR)  
**Andy Harris**, New York University, Abu Dhabi (AC)  
**Aytuğ Şaşmaz**, Harvard University, USA (CR, WP)  
**Blair Read**, Massachusetts Institute of Technology, USA (W)  
**Boniface Dulani**, IPOR Malawi; Chancellor College, University of Malawi, Malawi (CR, W)  
**Carla B. Abdo-Katsipis**, Wesleyan University, USA (W)  
**Carolyn Barnett**, Princeton University, USA (CR, W, WP)  
**Cecilia Ahsan Jansson**, GLD, University of Gothenburg, Sweden (S, CR)  
**Chao-yo Cheng**, London School of Economics, UK, (W)  
**Chrispin Mphande**, Mzuzu University, Malawi (AC)  
**Connor T. Jerzak**, Linköping University, Sweden (VS)  
**Dalila Sabanic**, GLD, University of Gothenburg, Sweden (S)  
**Daniel Appiah**, University of Ghana Business School, Ghana (AC, CR)  
**Daniela Völz**, University of Gothenburg, Sweden (I)  
**David T. Buckley**, University of Louisville, USA (CR, AC, WP)  
**Deodatus Patrick Shayo**, Ardhi University, Tanzania (WP)  
**Devdatt Dubhashi**, Chalmers University of Technology, Sweden (CR)  
**Eliphaz Kuseni**, Lilongwe University of Agriculture and Natural Resources, Malawi (W)  
**Elise Tengs**, University of Gothenburg, Sweden (PhD)  
**Ellen Lust**, GLD, University of Gothenburg, Sweden (D, AC, S, W)  
**Erica Ann Metheney**, GLD, University of Gothenburg, Sweden (S)  
**Ezgi Irgil**, University of Gothenburg, Sweden (PhD)  
**Felix Dwinger**, University of Gothenburg, Sweden (PhD)  
**Felix Hartmann**, University of Gothenburg, Sweden (PhD)  
**Francesco Colin**, Erasmus University Rotterdam, The Netherlands (CR, W)  
**Frazer Macdonald Hay**, University of Edinburgh, UK (AC)  
**Fredrik Johansson**, Chalmers University of Technology, Sweden (CR)  
**Hanna Andersson**, Lund University, Sweden (I)  
**Hanne Van Capellen**, University of Antwerp, Belgium (AC)  
**Hans Lueders**, Stanford University, USA (CR, WP)  
**Intissar Kherigi**, Sciences Po, Paris (CR, WP)  
**Isabel Wilson**, GLD, University of Gothenburg, Sweden (I, S)  
**Isabell Schierenbeck**, University of Gothenburg, Sweden (CR)  
**Jacob Cassani**, University College London, UK (W, WP)  
**James Mulenga**, Mulungushi University, Zambia (WP)  
**Janica Magat**, Texas A&M University, USA (AC)  
**Jannis Grimm**, Freie Universität Berlin, Germany (CR)  
**Jeffrey W. Paller**, University of San Francisco, USA (CR)  
**Jennifer Bergman**, GLD, University of Gothenburg, Sweden (I, S)

**Jennifer Murtazashvili**, University of Pittsburgh, USA (CR)  
**Jeremy Horowitz**, Dartmouth College, USA (CR, W)  
**Jeremy Seekings**, University of Cape Town, South Africa (CR)  
**Joe Mlenga**, The Polytechnic, University of Malawi, Malawi (AC)  
**Josepha Wessels**, Lund University, Sweden (CR)  
**Julia Clark**, University of California, San Diego; World Bank, USA (CR, WP)  
**Karen E. Ferree**, University of California, San Diego, USA (AC, CR, W)  
**Kate Baldwin**, Yale University, USA (CR, W)  
**Katelyn Nutley**, University of Konstanz / University of Gothenburg, Germany / Sweden (I)  
**Kirk Ammerman**, GLD, University of Gothenburg, Sweden (S)  
**Kristen Kao**, GLD, University of Gothenburg, Sweden (S, AC, CR, W)  
**Kristin Fabbe**, Harvard Business School, USA (CR)  
**Lama Mourad**, Carleton University, Canada (AC)  
**Lauren Honig**, Boston College, USA (CR)  
**Lena Wängnerud**, University of Gothenburg, Sweden (CR)  
**Lihi Ben Shitrit**, University of Georgia, USA (W)  
**Lindsay Benstead**, Portland State University, USA (AC, CR, W)  
**Linnéa Nirbrant**, University of Gothenburg, Sweden (I)  
**Lucas Fischer Madsen**, University of Gothenburg, Sweden (I)  
**Mara Revkin**, Georgetown University, USA (AC, CR, W, WP)  
**Marcia Grimes**, University of Gothenburg, Sweden (AC, CR)  
**Marcus Skog**, GLD, University of Gothenburg, Sweden (S)  
**Marcus Tannenberg**, University of Gothenburg, Sweden (PhD)  
**Maria Brandén**, Linköping University, Sweden (CR)  
**Mariana Martins Cardoso**, Lund University, Sweden (I)  
**Marika Sosnowski**, GIGA Institute of Middle East Studies, Germany (CR, W)  
**Marja Hinfelaar**, SAIPAR, Zambia (CR, W)  
**Marwa Shalaby**, University of Wisconsin-Madison, USA (AC, CR, W, WP)  
**Matthias Krönke**, University of Cape Town, South Africa (CR, W)  
**Melani Cammett**, Harvard University, USA (AC, CR, WP)  
**Melissa Marschall**, Rice University, USA (WP)  
**Michael Seese**, WZB Berlin Social Science Center, Germany (AC)  
**Michael Wahman**, Michigan State University, USA (CR)  
**Mina Ghassaban Kjellén**, GLD, University of Gothenburg, Sweden (S)  
**Mine Eder**, Bogazici University, Turkey (CR)  
**Miquel Pellicer**, University of Marburg, Germany (CR)  
**Monica Komer**, University of Wisconsin Madison, USA (CR, W)  
**Mulenga Chonzi Mulenga**, Mulungushi University, Zambia (WP)  
**Ngoc Phan**, Duke University, USA (WP)  
**Nico Ravanilla**, University of California, San Diego, USA (AC)  
**Nicole Beardsworth**, University of the Witwatersrand, South Africa (CR)  
**Nora Stel**, Universiteit Utrecht, The Netherlands (AC)  
**Olivia Östlin**, GLD, University of Gothenburg, Sweden (S)  
**Peter Esaïasson**, University of Gothenburg, Sweden (CR)  
**Peter Hedström**, KTH, Sweden (CR)  
**Pierre Landry**, Chinese University of Hong Kong, Hong Kong (AC, CR)  
**Prisca Jöst**, University of Mannheim, Germany (CR, PhD, W)  
**Ragnhild L. Muriaas**, University of Bergen, Norway (CR)  
**Rose Camille Vincent**, ETH Zurich, Switzerland (AC)  
**Rose Shaber-Twedt**, GLD, University of Gothenburg, Sweden (S)  
**Ruth Carlitz**, Tulane University, USA (CR, W)  
**Saadet Konak Unal**, University of Houston, USA (WP)  
**Salih Yasun**, Indiana University-Bloomington, USA (WP)  
**Salma Mousa**, Yale University, USA (CR)  
**Samuel Larsson**, University of Gothenburg, Sweden (I)  
**Sara Bjurenvall**, GLD, University of Gothenburg, Sweden, (S)  
**Sinamis Doughouz**, University of Gothenburg, Sweden (I)  
**Steven Brooke**, University of Wisconsin-Madison, USA (AC, CR, WP)  
**Sultan Mehmoood**, New Economic School in Moscow, Russia; World Bank DE JURE (WP)  
**Tanu Kumar**, College of William and Mary, USA (W)  
**Thabit Jacob**, GLD, University of Gothenburg (PR, VS)  
**Tove Wikehult**, GLD, University of Gothenburg, Sweden (S)  
**Tugba Bozcaga**, Harvard University, USA (AC, CR, W)  
**Valeriya Mechkova**, University of Gothenburg, Sweden (AC, CR, PhD, W, WP)  
**Valesca Lima**, Dublin City University, Ireland (WP)  
**Xiao-Li Meng**, Harvard University, USA (CR)  
**Yuree Noh**, Rhode Island College; Harvard Kennedy School, USA (W)





The Program on Governance  
and Local Development

## FUNDERS



FBA

Folke Bernadotte Academy

FORMAS



W | LUNDGREN  
M | STIFTELSE



RIKSBANKENS  
JUBILEUMSFOND  
FRÄMJAR HUMANIORA  
OCH SAMHÄLLSVETENSKAP



Vetenskapsrådet



THE WORLD BANK  
IBRD • IDA

**The Program on Governance and Local Development**  
Department of Political Science, University of Gothenburg  
Box 711, 405 30 Gothenburg, Sweden  
Visiting address: Sprängkullsgatan 19, Gothenburg  
[contact@gld.gu.se](mailto:contact@gld.gu.se)