



UNIVERSITY OF
GOTHENBURG

ANNUAL REPORT 2022

Governance and Local
Development Institute



Report produced by the Governance and Local Development Institute

Annual Report Team: Sara Bjurenvall, Ellen Lust, Erica Ann Metheney, and Rose Shaber-Twedt

Design: Sara Bjurenvall

Photo Credits: Commonwealth Secretariat, Flickr, Pexels, Sara Bjurenvall, Tanya Zion-Waldoks, Unsplash

Follow us on social media!

Twitter: @GLD_Gothenburg

Facebook: @Governance and Local Development - GLD

LinkedIn: @Governance and Local Development Institute

Disclaimer: The views and opinions expressed in publications cited in this report are those of the authors. They do not necessarily reflect an official position of the GLD Institute.

GOVERNANCE AND LOCAL DEVELOPMENT INSTITUTE



TABLE OF CONTENTS

ABOUT US

Director's Note
Team Members
GLD Fellows
Short-Term Grant Awardees

4

OUR RESEARCH

New Projects
Ongoing Projects
Projects Completed in 2022
GLD Data

16

OUR EVENTS

Conferences
Workshops
Policy Roundtables

30

DISSEMINATION

Governance Uncovered
Publications
GLD Working Papers

40

WHAT'S NEXT? GLD IN 2023

Upcoming Research, Events, and
Dissemination

48

ABOUT US

ABOUT US

The Governance and Local Development Institute (GLD) is a research institute based at the University of Gothenburg, originally founded in 2013 at Yale University by Professor Ellen Lust. GLD focuses on the local factors driving governance and development. The institute is dedicated to international collaboration and scientifically rigorous, policy-relevant research in an effort to promote human welfare across the globe. Findings are made available to the international and domestic communities through academic publications, policy briefs, public presentations, social media, and on-the-ground workshops in cooperation with local partners.

OUR MISSION

Our research focuses on answering a fundamental question: why are some communities able to provide secure environments, good education, adequate healthcare, and other factors that encourage human development, while others fail to do so? We engage with communities across the world, develop methodological tools, gather data and undertake analyses on major issues affecting societies today, and disseminate findings to the communities in which we work, relevant policymakers, and other academics.

DIRECTOR'S NOTE

Welcome to the first annual report of the Governance and Local Development Institute! Since I founded GLD at Yale University in 2013, we have been known as “The Program on Governance and Local Development,” but now we have changed our name to the “Governance and Local Development Institute,” complete with a new logo, which you may have noticed on our social media channels and in this report. These changes reflect the expansion of our projects and institutionalization of the organization – the results of generous funding and hard work by our team members, associates, and collaborators. Together, we continuously seek better ways to produce high-quality, policy-relevant research on governance and local development and to be a convening force for researchers and other stakeholders engaged in such efforts.

Indeed, 2022 saw continued growth and development as GLD focused on establishing a new, post-pandemic ‘normal.’ As health risks and restrictions declined, we could travel and meet again. Like most of the world, we happily stepped away from a period of non-stop virtual meetings and were reminded of the importance of physical encounters – strengthening old relationships and making new ones. Yet, we also value the new lessons and technologies the pandemic fostered. We sought to leverage these, devising organizational norms and processes that – we hope – will allow us to remain productive far into the future.

For GLD, the most obvious sign the pandemic had waned was seen in our conference schedule. In 2021, I wrote, “[we] hope 2022 is the year that we



will all meet again,” and this certainly came true! During the course of six weeks, we held three different conferences with a total of 129 participants. It was a great experience, discussing the research that unites us and catching up on more personal matters. Hosting three conferences in six weeks was also an organizational challenge, so a huge thank you to the GLD Team for pulling that off with excellence.

Returning to the office also prompted us to review old ways of doing things. We introduced a new format for our podcast, *Governance Uncovered*, which you can read more about on page 40. We used hybrid formats to bring together a wider network of scholars for GLD’s *Work-in-Progress* series, multiple roundtables, and other events. And with a greater appreciation for the value of virtual collaboration, we welcomed our first cohort of GLD Non-Residential Fellows from around the world.

We made progress on other fronts as well. We completed four projects and started two new ones.



Ellen Lust presenting at GLD’s Annual Conference 2022

We held 14 workshops, 1 seminar, 6 policy roundtables, and 3 conferences. We produced 7 working papers, 9 policy briefs, 10 podcast episodes, and 12 GLD Fellow Interviews. And we published 7 articles and 3 books. Whew!

On top of this, we greatly expanded our network. We awarded four new researchers with Short-Term Grants (pages 12-13) and developed four new collaborations with research centers in the MENA region (page 14). We also hosted the first class of Fellows (page 10), welcomed 11 GLD Associates (page 9), and were joined by five new staff members.

We expect the year ahead to be equally busy and exciting. We are focusing on disseminating our data and launching new projects, which you will hear about throughout 2023. We are also facing some staff changes that are both exciting and concerning. Due to changes in Swedish labor law, we have had to bid farewell to many excellent colleagues. On the brighter side, we will be hiring a lot of new staff and we expect they will greatly enrich GLD on our way

forward. If you are interested in working with GLD, then make sure to keep an eye on our website for current and upcoming opportunities.

We hope you enjoy reading this report and keep following us as we move through the year. Thanks to all of you who follow us, collaborate with us, show up to our events, and read our work. A big thank you to all of our funders and the community at the University of Gothenburg for their ongoing support. And my most heartfelt thanks to the amazing GLD Team. None of this would be possible without the skilled and dedicated team members who work together in such an exceptional fashion. To all who make our work possible, thank you.

And finally, as always, if you have any questions or comments on this report’s content or our work, more generally, do not hesitate to reach out to us. You can best reach us at contact@gld.gu.se. Happy reading!

Best,

TEAM MEMBERS

DIRECTOR



Ellen Lust
Founding Director

RESEARCH TEAM



Jennifer Bergman
Research Associate



**Mina Ghassaban
Kjellén**
Research Associate



Ghadeer Hussein
Research Associate



Thabit Jacob
Postdoctoral
Researcher



Jeffrey Paller
Researcher

DATA TEAM



Kirk Ammerman
Survey Manager



Erica Ann Metheney
Statistician &
Head of GLD Data



Baris Soybilgen
Data Analyst



Samuel Wakuma
Data Analyst

MANAGEMENT



Sara Bjurevall
Communications
Officer



Charlotta Junger
Program Coordinator



Dalila Sabanic
Program &
Financial Manager
(on leave)



Rose Shaber-Twedt
Director's Assistant
& Program Manager



Tove Wikehult
Program Coordinator
(on leave)



The GLD Team during a team retreat in October 2022.

INTERNS

Spring

Kristin Bäck Persson (Sweden)
Emelie Hultén (Sweden)
Paulina Jennebratt (Sweden)
Joyce Makuei (Kenya)
Joel Sigrell (Sweden)

Fall

Enowbachem Agbortanyi (Cameroon)
Victor Saidi Phiri (Zambia)
Hebatuallah Saleh (Egypt)

PHD STUDENTS

Felix Dwinger, *University of Gothenburg*
Marcus Tannenberg, *University of Gothenburg*

VISITING SCHOLARS

Connor Jerzak, *Linköping University*
Kimuli Kasara, *Columbia University*
Marwa Shalaby, *University of Wisconsin-Madison*

GLD ASSOCIATES

Cecilia Ahsan Jansson, *University of Gothenburg*
Daniel Appiah, *University of Ghana*
Kate Baldwin, *Yale University*
Mine Eder, *Bogazici University*
Karen E. Ferree, *University of California, San Diego*
Adam Harris, *University College London*
Lauren Honig, *Boston College*
Prisca Jöst, *University of Konstanz*
Pierre Landry, *Chinese University of Hong Kong*
Marwa Shalaby, *University of Wisconsin-Madison*

DEPARTURES

We want to thank our colleagues that left us in 2022 for excellent work and a great team spirit. Wishing them all the best in their future careers and adventures!

Kirk Ammerman (Survey Manager); Jennifer Bergman (Research Associate); Mina Ghassaban Kjellén (Research Associate); Baris Soybilgen (Data Analyst); Tove Wikehult (Program Coordinator).

GLD FELLOWS

2022 was the first year of GLD's Fellowship Program. We chose 12 Fellows from a very competitive pool. These Fellows from around the world were guaranteed free data consultation, the opportunity to access training to learn new methods and tools, 20 hours of research assistance per semester, and research feedback via the GLD Work-in-Progress Workshop Series. In return, they are invited to participate in the GLD Annual Conference, attend seminars and workshops, assist in reviewing Short-Term Grant applications, plan future Annual Conferences, and produce a working paper and/or a policy brief with GLD.

It has been great getting to know this year's Fellows, both personally and professionally. Interviews with each and every one of them can be found on our website!



FELLOWS OF 2022



Tugba Bozcaga
King's College London



Alexandra Domike Blackman
Cornell University



Marie Gagné
Concordia University



Christopher Gore
Ryerson University



Andy Harris
New York University,
Abu Dhabi



Matthias Krönke
University of Cape
Town



Hans Lueders
Stanford University



Ian Madison
London School of
Economics



Sombo Muzata
American Society
for Public
Administration,
Zambia Institute of
Chartered
Accountants



Eitan Paul
University of Michigan



Alesha Porinsky
Northern Illinois
University



Catlan Reardon
University of
California, Berkeley



Fellows at GLD's 5th Annual Conference

FROM GLD FELLOW INTERVIEWS

”

I think it is important for researchers in the social sciences to remember, regardless of epistemology, that people are at the center of their research. Thus, both in film and research, ethical engagement with communities is of utmost importance.”

- Alesha Porinsky

”

Today, I often teach environmental policy and politics to students who are not majoring in political science. I try to help them understand the incentives and disincentives for politicians to act while also pointing out how citizens, organizations, and politicians act to make positive change.”

- Christopher Gore

”

Southeast Asia is an incredibly diverse and dynamic region that remains understudied in the West, particularly in the United States, where I'm from. I hope my research in Southeast Asia can increase awareness and understanding of the region...”

- Eitan Paul

”

I was surprised by how quickly I bought into the bizarrely competitive and almost entirely national aspect of Covid-19, kind of like a morbid version (literally) of the Olympic Games. Which country is doing better?”

- Ian Madison

”

I think that the small insights you gain from day-to-day interactions can be incredibly helpful in developing research questions and understanding the specific quirks of the context you are studying.”

- Catlan Reardon

SHORT-TERM GRANT AWARDEES

GLD supports researchers around the world through our ongoing Short-Term Grant program. This year, we awarded four grants to scholars from Canada, the US, and the UK doing research in Burkina Faso, Israel/Palestine, Malawi, and Senegal.



SPRING 2022

Hannah Early Bagdanov (University of Notre Dame)

Project Title: *Everyday Forms of Engagement with the State: Contested Territories, Social Networks, and the Pursuit of Welfare in Israel/Palestine.*

Research Country: Israel/Palestine

"My project examines when and how civilians engage with state institutions in contested territories to pursue public goods and social services. In contexts of conflict where the state's sovereignty is contested, significant variation exists in whether opposition group members are willing to engage with state institutions in pursuit of state resources. In the project, I develop and test a theory of how social networks affect civilian-state engagement and non-engagement, primarily focusing on the case of East Jerusalem. I became interested about this while studying Arabic in East Jerusalem, hearing stories from

friends about how they navigate their relations with the Israeli state in surprising and seemingly contradictory ways. It led me to wonder if the difficulty of service access for Palestinians in East Jerusalem could be reduced by a fuller understanding of the everyday person's decision calculus regarding their engagement with the Israeli state. Thus, I decided to pursue the project when it presented itself as a puzzle to be solved for the sake of academic theory and the betterment of Palestinian communities fighting for their rights to equitable treatment by welfare providers."

Marie Gagné (Concordia University)

Project Title: *Protests against the Large-Scale Land Acquisitions, Electoral Democracy, and the Emergence of Rural Citizenship in Senegal.*

Research Country: Senegal

"My project examines the implications of large-scale land acquisitions for electoral democracy and citizenship in Senegal. In this country, municipal councils manage most of the land, an asset that remains fundamental for rural livelihoods. In many communities, citizens have ousted municipal councilors with a record of poor

land governance. But in others, incumbent candidates have been re-elected despite widespread opposition to land deals. My research seeks to understand this intriguing variation through a combination of statistical analysis and qualitative interviews."



FALL 2022



Alexander Yeandle

Project Title: *ICTs, Local Development and Election Integrity: Evidence from Rural Malawi.*
Research Country: Malawi

"My project seeks to understand how technological change affects the quality of elections. Looking at rural Malawi, I study how mobile phone coverage drives local economic development and the consequences this has on the democratic process. In particular, I argue that local development has counterintuitive effects on the incentives and behaviours of election officials. Across the world, we know that free and fair elections have the power to greatly improve the

welfare of marginalised citizens. Yet, while many assume that technological progress will empower democratic institutions, in many countries this has not been the case. Adding to our understanding of how new technology interacts with political processes is an important question for scholars and practitioners. Across Sub-Saharan Africa, no technological change seems as topical as rising access to mobile phones."



Stuart Russel

Project Title: *Money in the Bank: Horizontal Accountability and 'Underspending' in Burkina Faso.*

Research Country: Burkina Faso.

"My research project studies the politics of underspending in Burkina Faso's municipalities. In many developing contexts, it is relatively common for governments to fail to spend a significant proportion of their available resources, even in the face of immense need. I am broadly interested in understanding how political factors shape such underspending. For instance, do the bureaucrats who approve municipal spending do so faster or more frequently for municipalities aligned with the central government? Alternatively, does political fractionalization and gridlock within municipal councils impede these expenditures?"

I believe this project is particularly exciting for two reasons. First, interviews I have conducted in countries across West Africa have highlighted un-

derspending as an important, but understudied, problem. Second, I am creating a large database of municipal procurement records in Burkina Faso as part of my project. As far as I know, this project represents the first quantitative analysis of procurement records in a sub-Saharan African country. While social scientists have studied procurement in contexts such as the United States and Italy, such administrative records are more difficult to study in many developing countries as they are often paper-based and not well digitized. I, therefore, hope that the project provides a detailed picture of how politics distorts some of the state's most basic, and most important, administrative processes."

COLLABORATIONS

New Collaborations

GLD, in collaboration with Alternative Policy Solutions (APS) at *The American University in Cairo*, arranged a roundtable series during the summer and autumn of 2022.

The series revolved around climate change and environmental justice research in the Middle East and North Africa and resulted in three constructive policy discussions (see page 38) that can be found on GLD's YouTube Channel.

This collaboration is a part of the project "Governance and Local Development in the Middle East and North Africa" (see page 19).

The Policy Roundtable Series was held with:

Center for Environmental Studies and Research (CESAR), *Sultan Qaboos University*, Oman.

Center of Excellence for Climate Change and Environmental Technologies (CECCET), *Arab American University*, Palestine.

Faculty of Agriculture, *University of Khartoum*, Sudan

Institute of Environmental Studies (IES), *University of Khartoum*, Sudan.

The Climate Change and Environment program (CC&E), Issam Fares Institute for Public Policy and International Affairs, *American University in Beirut*, Lebanon.



THE YEAR IN NUMBERS

389 EVENT PARTICIPANTS

65 PRESENTATIONS

18 CONFERENCES, WORKSHOPS, AND SEMINARS

18 PUBLICATIONS

10 PODCAST EPISODES

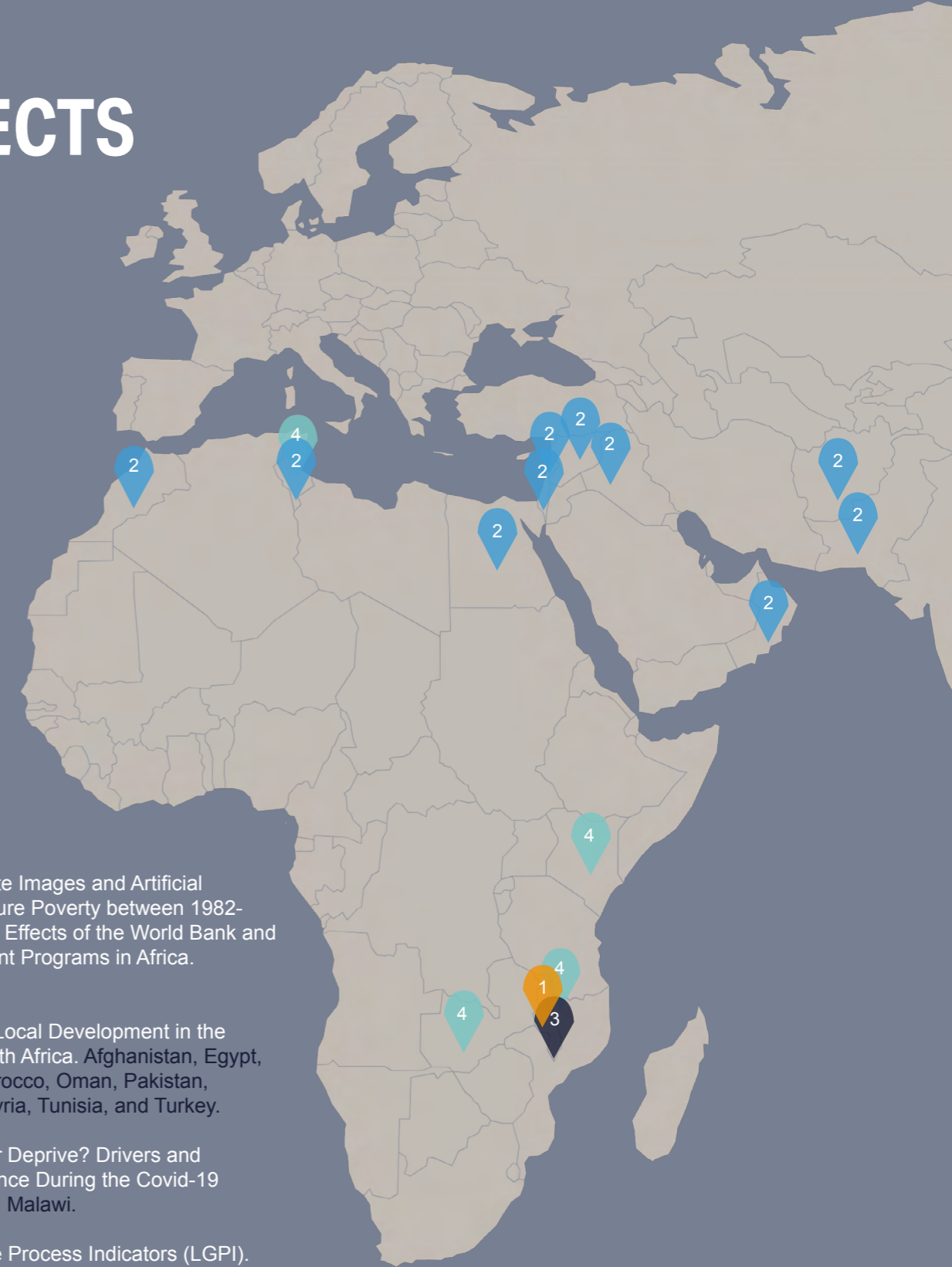
9 POLICY BRIEFS

6 POLICY ROUNDTABLES

OUR RESEARCH



GLD PROJECTS



- 1. Combining Satellite Images and Artificial Intelligence to Measure Poverty between 1982-2020: Explaining the Effects of the World Bank and Chinese Development Programs in Africa. (Malawi).
- 2. Governance and Local Development in the Middle East and North Africa. Afghanistan, Egypt, Israel, Lebanon, Morocco, Oman, Pakistan, Palestine, Sudan, Syria, Tunisia, and Turkey.
- 3. Survive, Thrive, or Deprive? Drivers and Outcomes of Resilience During the Covid-19 Pandemic in Malawi. Malawi.
- 4. Local Governance Process Indicators (LGPI). Kenya, Malawi, Tunisia, and Zambia (so far).

NEW PROJECTS

2022

Survive, Thrive, or Deprive? Drivers and Outcomes of Resilience During the Covid-19 Pandemic in Malawi.

2022 - 2024



The project *Survive, Thrive, or Deprive? Drivers and Outcomes of Resilience During the Covid-19 Pandemic in Malawi* examines why some individuals and communities respond better than others to crises, and the longer-term effects of crises on governance and welfare. Examining community governance in Malawi during the Covid-19 pandemic, this project aims to answer three questions:

- 1) What explains when and how communities implement and enforce policies to mitigate the pandemic's negative effects? When/why does this impact poverty and inequality?
- 2) How do community factors and individuals' characteristics affect how individuals manage crises?
- 3) How has the pandemic altered community social ties and authority?

To answer these questions, we draw on previous findings relating to resilience, public health, and governance, and leverage unique panel data and case studies from Malawi. The panel data includes face-to-face surveys with households and elites conducted in 2019, three telephone surveys conducted during the pandemic, and a post-pandemic F2F survey. As one of the poorest populations in the world, with clearly defined and gendered local authority structures, Malawi is particularly well-suited to provide crisis response insights at individual and community levels. Moreover, the data allows for pathbreaking research, as this is - to our knowledge - the most rigorous, sustained examination of crisis response. The findings will yield theoretical understandings of resilience, health crisis response, and authority, while supporting policymakers and development specialists to alleviate poverty and other negative consequences of crises.

Acknowledgements

This project is supported by the *Survive, Thrive, or Deprive? Drivers and Outcomes of Resilience During the Covid-19 Pandemic in Malawi* grant (Vetenskapsrådet – 2021-04651).



Scan the QR Code to view the project webpage

Funding in SEK:

4,417,150



Governance and Local Development in the Middle East and North Africa

2022 - 2024

This project aims to promote scholarly collaboration and strengthen the community of scholars working on governance and local development issues in the MENA, Europe, the US, and elsewhere by providing capacity-building opportunities. The project also aims to create a sustainable bridge between scholars and policy practitioners working in and/or on the MENA region. It thereby provides policymakers, practitioners, and the general public in the MENA, Europe, and the US with a better understanding of key local governance and development issues.

Part of this project is being implemented in collaboration with **Alternative Policy Solutions** (APS) at The American University in Cairo. It convenes researchers from Gothenburg, AUC, and others at MENA-based institutions and focuses on governance, social engineering, climate change, and sustainability across the MENA Region.

In 2022, this project generated:

- 6** Policy Roundtables
- 6** New Collaborations
- 5** Policy Briefs

Acknowledgements

This project is supported by the *Governance and Local Development in the Middle East and North Africa* grant (Carnegie Corporation of New York – G-21-58464).

Funding in SEK:

3,616,500



Scan the QR Code to view the project webpage

ONGOING PROJECTS

The Local Governance Process Indicators (LGPI) – Flagship Project

2015-

Observant readers might have noted that this project's name was updated in 2022, from the Local Governance Performance Index, as it was originally called, to the Local Governance *Process Indicators*. The reason behind this change is (1) to better capture the diversity this measure provides and (2) to mirror the 18 indicators across 4 topics that have been established, based on the household surveys the LGPI uses.

The update to the LGPI is a result of the GLD team's work refining the focus of the indicators and the GLD data team's identification of statistical and computational issues. The data team is still working on the refinement, and the first computation of the indicators is planned to be completed in early 2023.

The data team also put together the first LGPI Demo Dashboard in 2022, which included an introductory video to the LGPI. The dashboard was presented at GLD's Annual Conference to get early feedback on the indicators and how to best present them to the public.

Acknowledgements

This project is supported by *The Swedish Research Council Recruitment Grant* (Swedish Research Council - E0003801); *The Social Institutions and Governance: Lessons from Sub-Saharan Africa* (Swedish Research Council - 2016-01687); *The Governance Challenge of Urbanization* (FORMAS – 2016-00228); and *Survive, Thrive, or Deprive? Drivers and Outcomes of Resilience During the Covid-19 Pandemic in Malawi* (Vetenskapsrådet – 2021-04651)

What is the LGPI?

The LGPI is a new approach to the measurement, analysis and improvement of local governance. To obtain the LGPI indicators, we employ a household survey clustered at the community level. This survey gathers information that allows us to create indicators of **Authority, Corruption, Extraction, Participation, and Transparency**.

What is important about the LGPI?

The LGPI incorporates **state and non-state governance**, providing a more comprehensive understanding of how communities are governed. It emphasizes experiences, in contrast to surveys based on satisfaction or perception.

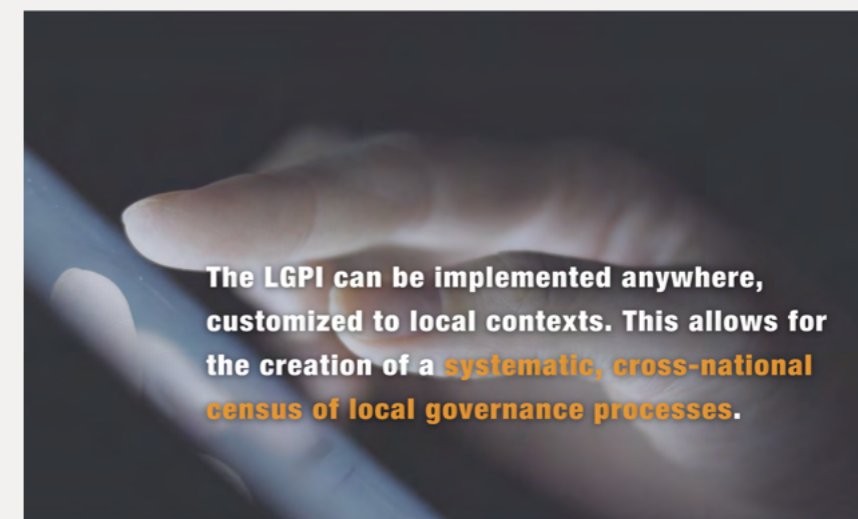
It is a **locally representative survey** including both those who obtain services and those who fail to do so. It measures local variation in governance and outcomes at the **community level**. Finally, the LGPI can be implemented anywhere, customized to local contexts.

How can one use the LGPI?

Researchers can use existing indicators to support one's research process, or they can implement the LGPI in collaboration with GLD. This helps to make the LGPI a **global record of local governance**.

Governments, development specialists, donors, and other policymakers can use the LGPI indicators to identify community needs, **design programs and policies**, and evaluate the outcomes. Business communities, civil society activists, and other citizens can use the LGPI in **advocacy efforts** to improve governance and access to public services.

Images from "Introducing the LGPI."
Video code:



Combining Satellite Images and Artificial Intelligence to Measure Poverty in 1982-2020: Explaining the Effects of World Bank and Chinese Development Programs in Africa.

2021-2026



GLD, in collaboration with other departments at GU, Linköping University, Chalmers University of Technology, and Harvard University, is undertaking a large project working to identify how competing development programs alter African communities' opportunities to exit the poverty cycle through the use of satellite images, analysed via AI, and mixed survey methods to develop theories of the varieties of poverty traps.

GLD's role is to conceptualise community-level power structures that impact these poverty traps and to consider to what extent and how World Bank and Chinese aid programs help to break poverty traps. We will do so by focusing on the nature of poverty traps at individual and community levels and the impact of existing aid programs in the country. GLD will employ surveys (based on the LGPI); conduct case study interviews with village heads, development chairs, local elders, and the international donor community; and review existing documents, all with the aim to generate a deeper understanding of why donors operate in specific communities and whether this aid defuses poverty traps.

Principal Investigator: Adel Daoud (*Linköping University*);
Research Collaborators: Maria Brandén (*Linköping University*); Devdatt Dubhashi (*Chalmers University of Technology*); Peter Hedström (*Linköping University*); Fredrik Johansson (*Chalmers University of Technology*); Ellen Lust (*University of Gothenburg*); Xiao-Li Meng (*Harvard*).

Acknowledgements

This project is supported by the *Combining Satellite images and Artificial Intelligence to Measure Poverty from 1982-2020 and Use These Data to Explain the Effects of World Bank and Chinese Development Programs in Africa* grant (Swedish Research Council – 2020-0388).

Funding in SEK:

12, 239,000



Scan the QR Code to view the project webpage



PROJECTS COMPLETED IN 2022

The Zambian Election Panel Survey (ZEPS)

The 2021 election was a crucial test for Zambian democracy. Potentials for further democratic erosion, a decline in meaningful participation, and prospects for election-related violence, increased concerns about democracy in Zambia among both local and international stakeholders. However, the tenuous situation in Zambia also presented an opportunity to interrogate long-held assumptions about democracy in Africa. Accordingly, policymakers, development specialists, and academics of democratization, governance, and electoral systems needed to speculate on the impacts of socio-political institutions, public perceptions, and crises on election cycles.

Using the Zambia Election Panel Survey (ZEPS), a first-of-its-kind, multistage voter panel survey, this research focused on:

- Democracy and institutions
- Political campaigns and voter choice
- COVID-19 and political participation

The ZEPS project further aimed to uncover changes in Zambian public opinion throughout the electoral campaign and beyond. The use of strategic panel data made ZEPS a first attempt to study how electoral experiences, institutional performance, and political campaigns shape public opinion.

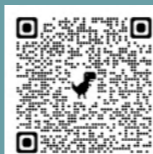


Photo: Liesl Harewood

Research Partners: Nicole Beardsworth (*University of the Witwatersrand*), Matthias Krönke (*University of Cape Town*), Jeremy Seekings (*University of Cape Town*), and Michael Wahman (*Michigan State University*).

Acknowledgements

This data collection was supported by the *University of Cape Town* and *Swedish Research Council Recruitment Grant* (Swedish Research Council – E0003801), PI: Pam Fredman. We thank Ubuntu Research and Rural Development Company Ltd. for implementing the survey, Dr. Erica Ann Metheney and Kirk Ammerman for data collection support, and Rose Shaber-Twedt, Dalila Sabanic, and Julie Nadler Visser for administrative support.



Scan the QR Code to view the project webpage

Gender and Politics in the Middle East and North Africa: A Decade after the Arab Uprisings

The momentous upheavals in the MENA region since 2011 have had substantial implications for gender politics. This project explored how the old paradigms, realities, and contexts for studying gender and politics in the region have been shaped and reshaped by unfolding political transformations since the onset of the uprisings. We convened a virtual workshop series in May 2021 to examine these changes and continued the discussion at an in-person workshop in May 2022.

Papers from both workshops have been collated in three special issues, currently under review.

These publications are led by:

Lena Wängnerud (*University of Gothenburg*) and **Marwa Shalaby** (*University of Wisconsin-Madison*).

Lihi Ben Shitrit (*University of Georgia*), **Nermin Allam** (*Rutgers University-Newark*), and **Rola El-Husseini** (*Lund University*).

Valentine Moghadam (*Northeastern University*) and **Yasmin Chilmeran** (*Swedish Institute of International Affairs*).

Acknowledgements

This project was a collaboration between GLD, the Quality of Government Institute (QoG), and the Working Group on Gender and Politics in the MENA and was supported by the *Gender and Politics in the Middle East and North Africa: A Decade of Uprisings*. (Riksbankens Jubileumsfond – F20-0096)

Funding in SEK:

446 000



Scan the QR Code to view the project webpage

Local Governance under Decentralization: Oman and in the Arab Region

This two-year study of Omani governance sought to better understand the challenges of decentralization processes in transitioning states. The study was initially designed to employ a multi-method approach to explore the challenges and potential impacts of decentralization. Its goal was to understand decentralization in the Omani context, while establishing sustainable scholarly and policy-relevant networks and dialogues around these issues. To these ends, GLD engaged with scholars, policy experts, and officials from Oman and elsewhere in the Middle East, Europe, and the United States as part of this project.

In the wake of Covid-19, this project pivoted to explore how the gender composition of deliberative bodies around the MENA region affects citizens' perceptions of their outcomes. This question is key to understanding how gender representation may affect citizens' views of local government outcomes, ideally gaining additional powers under decentralization. This part of the project employed telephone survey experiments conducted in Jordan, Morocco, and Tunisia.

This project was a collaborative effort between GLD and the University of Wisconsin-Madison.

Research Collaborators: Kristen Kao (University of Gothenburg), Marwa Shalaby (University of Wisconsin-Madison), and Chagai M. Weiss ()

Survey Partners: NAMA Strategic Intelligence Solutions (Jordan), One to One for Research and Polling (Morocco), ELKA Consulting (Tunisia).

Acknowledgements

This project was supported by *Local Governance under Decentralization: Oman in Comparative Perspective* (Carnegie Corporation of New York - G-18-56248)

Funding in SEK:

3,300,000



Scan the QR Code to view the project webpage

Public Goods Provision in the Shadow of Urbanization: Learning from Experiences in Kenya, Malawi, and Zambia

This project aimed to forge long-term partnerships with researchers in Malawi, Zambia, and Kenya. The project has mainly gone under the name "Swedish Reserach Links" (SRL), and 2022 marked its third and final year. In the best of circumstances, SRL would not have been an easy undertaking. Committing to a new, international collaboration based on a massive dataset you have never seen is a daunting challenge in and of itself. Then, there was COVID. As a result, the goals and expectations of the program were constantly changing.

Nevertheless, the project participants were able to find ways to overcome these challenges and produce engaging and insightful work. In May, our six research teams had the opportunity to meet face-to-face when they joined the GLD Annual Conference to present their findings. Presentations included work on taxation, co-ethnicity, corruption, migration, local governance, and elections. To round out SRL, we offered a one-week thesis

support and networking workshop for a junior scholar from Zambia, which provided opportunities for networking, receiving feedback on a prospective thesis topic, and working out data-related issues with GLD's data team.

Acknowledgements

This project was supported by *Public Goods Provision in the Shadow of Urbanization: Learning from Experiences in Malawi, Zambia, and Kenya* (Swedish Research Council - 2018-03967)

Funding in SEK:

796 735



Scan the QR Code to view the project webpage

SRL RESEARCH TEAMS

Alex Oguso (Kenya Revenue Authority)
Cecilia Ahsan Jansson (University of Gothenburg)
Ellen Lust (University of Gothenburg)

Eliphaz Kuseni (University of Malawi-Chancellor College)
Adam Harris (University College London)

Hangala Siachiwena (University of Cape Town)
Jeremy Horowitz (University of Chicago)

John Maara (University of Malawi-Chancellor College)
Barry Maydom (Birkbeck College, University of London)

Gowokani Chirwa (University of Malawi)
Amanda Robinson (Ohio State University)

Patricia Funjika (University of Zambia)
Karen E. Ferree (University of California, San Diego)

Photo: Alex Oguso presenting at GLD's 5th Annual Conference

GLD DATA

GLD Data saw a lot of change and success in 2022. Our survey manager Kirk Ammerman finished his time at GLD and began a job in the US. In January and February, respectively, Baris Soybilgen (Ph.D. in Economics) and Samuel Wakuma (MA in Economics) joined GLD Data as data analysts.

The data team dedicated a lot of time to the LGPI, which allowed for substantial gains in that project. The team's work on the computation of the indicators resulted in the first set of LGPI indicators being completed by the end of the year.

The data team also spent the year assisting GLD researchers on various projects by helping develop analysis plans, preparing datasets, writing code, and interpreting results.

GLD Data began recruiting its first postdoctoral researcher at the end of 2022 to assist with the computational aspects of various projects.

Additional Survey Support

In 2022, GLD Data also provided survey support for *Gender in Diplomacy* (GenDip) - a research program based at the University of Gothenburg. GLD Data assisted with the design, coding, and implementation of the surveys, and data analysis support in a project that studied the implementation of Sweden's feminist foreign policy.

36,194

OBSERVATIONS

380

VARIABLES (APPROX.)

109

COUNTRIES

4

SURVEYS

DATA ACCESS

GLD has a rich set of data on issues relating to governance and local development from countries in the Middle East, North Africa, and Sub-Saharan Africa. Our goal is always for our datasets to be available and used by those who work on similar topics.

We currently have data from

Tunisia Morocco
Kenya Zambia Malawi
Jordan Libya

Between the years of:

2012 - 2022

Topics include:

- Covid-19
- Dispute Resolution
- Elections
- Local Elites
- Local Governance
- Members of Parliament
- Service Provision



How to access GLD data

GLD has two types of data:

1) publicly available and 2) still under embargo.

You can access GLD's publicly available data via the *Harvard Dataverse* (dataverse.harvard.edu) by searching for "Governance and Local Development Institute".

It is also possible to request access to a dataset (or a piece of a dataset) that has not yet been made publicly available. To do so, follow the instructions below.

1. Download GLD's Data Use Agreement (DUA) using the QR code.



GLD Data Use Agreement

2. Determine which dataset(s) you would like access to for research or teaching.

You can do this by:

- A. Reviewing the list of datasets in the DUA
- B. *Coming soon* - Review the Datasets page on GLD's website

3. Email a completed and signed DUA to data@gld.gu.se.

4. A member of GLD's team will review your request and get back to you as soon as possible with next steps.

A. If your request is approved, we will provide you with details to access the data.

B. Otherwise, we will try to figure out a different agreement.

OUR EVENTS



GLD CONFERENCES

Gender and Politics in the Middle East and North Africa Conference

Date: 10-12 May 2022

Location: Varbergs Kusthotell, Sweden

This conference was part of the project “Gender and Politics in the Middle East and North Africa: A Decade after the Arab Uprisings” that you can read more about on page 25. The conference was a collaborative effort by researchers at GLD, the Quality of Government (QoG) Institute, and the Working Group on Gender and Politics in the MENA.

This conference brought together an international, interdisciplinary group of scholars to discuss cutting-edge research. It included 20 presentations divided across six panels over two days. The panels involved a brief presentation of each paper, with the majority of time devoted to comments, feedback, and questions. Three journal special issues stemming from this workshop are currently under review.



Photos from the Gender and Politics Workshop held in May 2022.
Photo Credit: Tanya Zion-Waldoks

Participants

Meriem Aissa, *Texas Woman's University*

Amy Alexander, *University of Gothenburg*

Nermin Allam, *Rutgers University*

Carolyn Barnett, *University of Arizona*

Lihi Ben Shitrit, *University of Georgia*

Lindsay J. Benstead, *Portland State University*

Jennifer Bergman, *University of Gothenburg*

Alexandra Blackman, *Cornell University*

Gamze Cavdar, *Colorado State University*

Yasmin Chilmeran, *Swedish Institute of International Affairs*

Pinar Dokumaci, *University of York*

Summer Forester, *Carleton College*

Maria Holt, *University of Westminster*

Mahmoud Jaraba, *Erlangen Centre for Islam and Law in Europe*

Tuba Kanci, *Kocaeli University*

Monica Komer, *University of Wisconsin-Madison*

Ellen Lust, *University of Gothenburg*

Valeriya Mechkova, *University of Gothenburg*

Yuree Noh, *Rhode Island College*

Kelsey Norman, *Rice University*

Isis Nusair, *Denison University*

Rose Shaber-Twedt, *University of Gothenburg*

Marwa Shalaby, *University of Wisconsin-Madison*

Simona Sharoni, *Merrimack College*

Aili Tripp, *University of Wisconsin-Madison*

Bozena Welborne, *Smith College*

Lena Wängnerud, *University of Gothenburg*

Tanya Zion-Waldoks, *Hebrew University of Jerusalem*

GLD's 5th Annual Conference. Giving and Taking: Studies on Extraction and Participation in Local Governance.

Date: 23 – 26 May 2022 **Location:** VANN Spa, Brastad Sweden

On May 23 - 26 we were finally able to meet in person again for our 5th Annual Conference - *Giving and Taking: Extraction and Participation in Local Governance*. Thank you so much to all who participated - there were so many interesting presentations, comments, and policy discussions for us to apply to our future work!

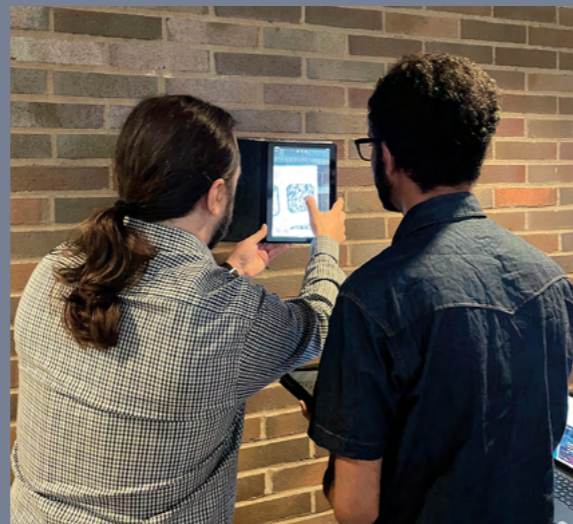


Photo Credit: Sara Bjurevall

Participants

Yemi Adamolekun, *Enough is Enough Nigeria*
 John-Paul Adjadeh, *Ministry of Chieftaincy and Religious Affairs*
 Cecilia Ahsan Jansson, *University of Gothenburg*
 Joseph Asunka, *Afrobarometer*
 Jennifer Bergman, *GLD*
 Sara Bjurevall, *GLD*
 Alexandra Blackman, *Cornell University*
 Frida Boräng, *University of Gothenburg*
 Kristin Bäck Persson, *GLD*
 Christopher Carter, *Harvard University*
 Gowokani Chijere Chirwa, *University of Malawi*
 Boniface Dulani, *University of Malawi-Chancellor College & IPOR Malawi*
 Mine Eder, *Bogazici University*
 Erin Fletcher, *Altitude Worldwide Research*
 Patricia Funjika, *University of Pretoria*
 Marie Gagné, *Concordia University*
 Christopher Gore, *Ryerson University*
 Marcia Grimes, *University of Gothenburg*
 Andy Harris, *New York University Abu Dhabi*
 Rabih Helou, *University of Pittsburgh*
 Allen Hicken, *University of Michigan*
 Marja Hinfelaar, *SAIPAR*
 Lauren Honig, *Boston College*
 Jeremy Horowitz, *Dartmouth College*
 Emelie Hultén, *GLD*
 Ghadeer Hussein, *GLD*
 Inan Izci, *Argüden Governance Academy*
 Thabit Jacob, *GLD*
 Paulina Jennebratt, *GLD*
 Connor Jerzak, *GLD*
 Charlotta Junger, *GLD*
 Kimuli Kasara, *Columbia University*
 Matthias Krönke, *University of Cape Town*
 Eliphaz Kuseni, *Multiconsult-Partners*
 Pierre Landry, *Chinese University of Hong Kong*
 Hans Lueders, *Stanford University*
 Ellen Lust, *GLD*
 John Maara, *University of Malawi-Chancellor College*
 Ian Madison, *London School of Economics*
 Rabia Malik, *University of Essex*
 Barry Maydom, *Birkbeck College, University of London*
 Erica Ann Metheney, *GLD*
 Ahmed Morsy, *Stockholm International Peace Research Institute (SIPRI)*
 Jennifer Murtazashvili, *University of Pittsburgh*
 Alex Oguso, *Kenya Revenue Authority*
 Jeffrey Paller, *GLD, University of Gothenburg*
 Eitan Paul, *University of Michigan*
 Catlan Reardon, *University of California, Berkeley*
 Rehab Sakr, *Cairo University*
 Rose Shaber-Twedt, *GLD*
 Marwa Shalaby, *University of Wisconsin-Madison*
 Joel Sigrell, *GLD*
 Baris Soybilgen, *GLD*
 Niels Terpstra, *Radboud University*
 Sebastian van Baalen, *Uppsala University*
 Ana Maria Vargas Falla, *Swedish International Centre for Local Democracy*
 Samuel Wakuma, *GLD*
 Meredith Weiss, *University at Albany*
 Salih Yasun, *Indiana University at Bloomington*

59

PARTICIPANTS

41

**UNIVERSITIES &
ORGANIZATIONS**

14

COUNTRIES

SWEMENA Conference 2022: Building Networks Across Sweden, the Middle East, and North Africa.

Date: 13 – 14 June 2022 **Location:** School of Global Studies, Gothenburg, Sweden

On June 13-14, GLD and the School of Global Studies (University of Gothenburg) hosted the first SWEMENA conference: *Building Networks Across Sweden, the Middle East, and North Africa*. The conference brought together researchers and practitioners from institutions across Sweden, and discussed contributions by Sweden-based researchers working on topics related to the MENA region. Several panels and roundtables were held and plenty of opportunities to network and discuss future collaborations were given.



Photo Credit: Sara Bjurevall

THIS IS SWEMENA

SWEMENA is a network consisting of practitioners from various institutions and organisations in Sweden. It is always welcoming new people and organisations interested in collaborations on topics related to the MENA region.

SWEMENA brings together different communities of researchers, practitioners and policy makers across Sweden. We all share an interest in the MENA region, as well as the commitment to produce research that is interdisciplinary, a source of dialogue and has a positive impact on policy and society.

SWEMENA aims to create an environment that encourages dialogue, knowledge exchange, and collaborations that can result in joint projects and research applications. It also aims to produce engaging and accessible research for the general public and non-academic audiences.

Organisations and institutions currently represented in SWEMENA

- *Ersta Sköndal Bräcke University College:* The Department of Social Sciences
- *Linnaeus University:* The Department of Political Science
- *Lund University:* Centre for Advanced Middle Eastern Studies
- *Lund University:* The Department of Political Science
- *Lund University:* Centre for Theology and Religious Studies
- *Malmö University:* The School of Arts and Communication
- *Stockholm International Peace Research Institute (SIPRI)*
- *Stockholm University:* The Department of Asian, Middle Eastern and Turkish Studies
- *Stockholm University Institute for Turkish Studies (SUITS)*
- *The Swedish Institute of International Affairs (UI)*
- *Södertörn University:* The Department of Social Science
- *Södertörn University:* The Institute of Contemporary History
- *University of Gothenburg:* The School of Global Studies
- *University of Gothenburg:* Governance and Local Development Institute
- *Uppsala University:* The Department of Theology

SEMINARS & WORKSHOPS

Protesting Jordan: Book seminar with Jillian Schwedler

Date: 27 October, 2022 **Location:** School of Global Studies, Gothenburg, Sweden

In October, GLD co-hosted a *Peace and Development* seminar with the School of Global Studies (University of Gothenburg). Jillian Schwedler, Professor of Political Science at Hunter College and the City University of New York Graduate Center, talked about her new book *Protesting Jordan: Geographies of Power and Dissent*.

Based on twenty-five years of field research, *Protesting Jordan* examines protests as they are situated in the built environment, bringing together considerations of networks, spatial imaginaries, space and place-making, and political geographies at local, national, regional, and global levels.

Work-in-Progress Workshop Series

Location: Department of Political Science, University of Gothenburg, and via Zoom.

Spring Series, 15 February – 11 May 2022

Valeriya Mechkova (University of Gothenburg) & **Ruth Carlitz** (Tulane University) *Women's Representation and Gender-Sensitive Responses to the COVID-19 Crisis*

Camille Barras (Cambridge University) *Decentralization and Political Participation: Evidence from Ukraine*

Andy Harris (New York University Abu Dhabi) & **Fanisi Mbozi** (New York University Abu Dhabi) *When Do Humans See Electoral Fraud? A Conjoint Experiment on the Microfoundations of Electoral Integrity*

Karen E Ferree (University of California, San Diego), **Ellen Lust** (University of Gothenburg), **Cecilia Ahsan Jansson** (University of Gothenburg), **Erica Ann Metheny** (University of Gothenburg) *Identity, Information and Voting: Lessons from African Elections*

Alexandra Domike Blackman (Cornell University) *Political Accountability in New Democracies*

Marika Sosnowski (German Institute for Global & Area Studies) *Between and Between: Life-Cycle Event Documentation in the Syrian Civil War*

Federica Duca (Public Affairs Research Institute) *Taxation and Extraction: The Case of Cameroon*

Prisca Jöst (University of Konstanz), **Ellen Lust** (University of Gothenburg), **Matthias Krönke** (University of Cape Town), and **Sarah Lockwood** (Cambridge University) *Participating in Politics: The Important Role of Partisanship in Encouraging Non-Electoral Political Participation in Zambia*

Fall Series, 6 September – 29 November 2022

Felipe Torres (University of Oxford) *Government Audits of Municipal Corruption and Belief Updating: Experimental Evidence*

Alesha Porisky (Northern Illinois University) *To Condition or Not to Condition? How Local Politics Shapes Cash Transfer Program Design in Kenya and Tanzania*

Alexander Yeandle (London School of Economics) *ICTs, Development and Election Fraud: Testing a New Mechanism in Malawi*

Nelson Ruiz (University of Essex), *How Do Electoral Outcomes Affect Campaign Contribution? The Role of Personal Loyalty and Investment Motives*

Pablo Balan (Tel Aviv University) *Property Rights and Social Dependence: How Informal Institutions Shape Land Formalization in Weak States*

Marcia Grimes and **Agnes Cornell** (University of Gothenburg) *Institutional Determinants of Civil-Society Organization's Claim-Making and Tactics: Experimental Evidence from Peru*

POLICY ROUNDTABLES

Local Governance in Afghanistan – Six Months After the Taliban Takeover

Date: 7 March 2022

Location: Department of Political Science, University of Gothenburg, and via Zoom

On August 30, 2021, the US withdrew their military troops from Afghanistan after twenty years, creating a power vacuum that allowed the Taliban to seize power of the country. The rest of the world waited to see what policies would be put into place by the new government, causing international aid to be paused and Afghanistan's overseas assets to

be frozen. Taliban rule and the effect of these international sanctions have already had dire consequences for local development and governance in Afghanistan. In this roundtable, we looked at the situation six months after the events of August 30 and explored how the situation looks locally in Afghanistan.

Panellists

Frances Brown, *Carnegie Endowment for International Peace*

Khalid Fahim, *The Swedish Committee for Afghanistan*

Timor Sharan, Local Governance & Development Expert, and former Senior Analyst for the *International Crisis Group in Afghanistan*

Mohammed Qadam Shah, *Seattle Pacific University*

Chair:

Jennifer Brick Murtazashvili, *Center for Governance and Markets at the University of Pittsburgh*, Nonresident Scholar at *Carnegie Endowment for International Peace*.

WATCH OUR POLICY ROUNDTABLES



QR-code to GLD's YouTube Channel

Local Effects on Tunisia's Political Crisis

Date: 7 June 2022

Location: Department of Political Science, University of Gothenburg and via Zoom

The aim of this roundtable was to shed light on the effects of Tunisia's ongoing political crisis on local politics and the everyday lives of the Tunisian people. Experts discussed topics relating to the role of the democratically elected municipal councils, the impact of the current political crisis, the challenges associated with service provision and access to basic needs, and the worsening economic conditions on deepening regional disparities. The event also tackled the long-term ramifications of the ongoing crisis on local governance, and provided concrete policy recommendations to promote citizen-based approaches to governance.

Panellists

Mohamed-Dhia Hammami, *Maxwell School of Citizenship and Public Affairs, Syracuse University*

Intissar Kherigi, *CERI – Sciences Po Paris*

Lana Salman, *The Middle East Initiative at the Belfer Center for Science and International Affairs, Harvard University*

Sarah Yerkes, *Carnegie Endowment for International Peace*

Chair:

Marwa Shalaby, *University of Wisconsin-Madison*

Youth Engagement in the Middle East and North Africa

Date: 31 October, 2022

Location: Department of Political Science, University of Gothenburg. And via Zoom.

Panellists

Rafiah Al Talei, editor-in-chief for *Sada* in *Carnegie's Middle East Program*

Shivan Fazil, *researcher at SIPRI's Middle East and North Africa Programme*

Asma Khalifa, *Libyan activist and researcher*

Dina Shehata, senior researcher and head of the *Egyptian Studies Unit at Al Ahram Center for Political and Strategic Studies*

Chair:

Marwa Shalaby, *University of Wisconsin-Madison*

The political engagement of MENA youth during the 2011 Arab Spring has sparked attention from international and domestic researchers and policymakers. This roundtable highlighted the challenges and constraints hindering youth political engagement and activism. Four prominent activists, researchers and civil society leaders presented findings from recent surveys on the attitudes and aspirations of MENA youth. They also discussed ways to promote youth political participation, with a special emphasis on youth engagement in local politics in Egypt, Tunisia, Libya, and Iraq.

GLD and Alternative Policy Solutions Policy Roundtable Series on Climate Change and Environmental Justice in the Middle East and North Africa

Date: 27 July, 7 September, and 12 October 2022

Location: Department of Political Science, University of Gothenburg and via Zoom

Together with Alternative Policy Solutions (APS), GLD hosted a special roundtable series on climate change and environmental justice research during the summer and autumn of 2022.

In total, we had five different panellists from five organizations across the Middle East and North African region:

- **Khalifa Al-Zeidi**, The Center for Environmental Studies and Research, *Sultan Qaboos University*
- **Dr. Nadim Farajalla**, Issam Fares, Institute for Public Policy and International Affairs, *American University in Beirut*
- **Dr. Mohamed Salih**, Faculty of Agriculture, *University of Khartoum*
- **Dr. Eyad Yacoub**, Center of Excellence for Climate Change and Environmental Technologies, *Arab American University*
- **Professor Yahia Gumaa**, Institute of Environmental Studies (IES), *University of Khartoum*

Alternative Policy Solutions is a non-partisan, public policy research project at the American University in Cairo. Their team consists of economists and researchers who use their expertise to draft alternative policy solutions in the fields of economic development, resource management, and institutional reform.



Roundtable Themes

Agriculture and Local Adaption to Climate Change in the MENA Region

The first roundtable in this series tackled agriculture and local climate adaptation strategies implemented in the MENA region. The panelists also reflected on the gaps in both research and policy regarding community-based adaptation to climate change.

Climate Change and Equity in the MENA

The second roundtable targeted climate change and equity in the MENA. The panellists discussed the impact of climate change on vulnerable groups such as women, migrants, and refugees, focusing on local contexts in Sudan, Oman, Lebanon, and Palestine

Land Degradation and Water Scarcity in the MENA region

The third and final policy roundtable in the environmental series focused on land degradation and water scarcity in the MENA region. As the MENA region is highly receptive to land degradation, it has been described as “the world’s most water-stressed.”



GOVERNANCE UNCOVERED

Podcast Episodes 2022

EPISODE 34, FEBRUARY 2022

Right to Information Act in India

Guest: Himanshu Jha

In this episode, we talk to Himanshu Jha from the Department of Political Science at South Asia Institute, Heidelberg University, Germany. Himanshu tells us about his recently published book *Capturing Institutional Change: The Case of the Right to Information Act in India*. In it, he examines the true nature of the Right to Information Act, and the history leading up to it. Himanshu further talks about norms of secrecy and openness and the impact that this Act has had on India's democracy.

EPISODE 35, MARCH 2022

Political Representation: What Does it Mean for Women?

Lena Wängnerud and Valeriya Mechkova

Host Ellen Lust talks with Lena and Valeriya about women's political representation, in terms of women members of political parties, parliaments and councils, and in terms of problems that apply more to women, such as healthcare and maternity leave. They do so by looking at historical and contextual factors, highlighting important variations in representation at local, regional, and national levels.

EPISODE 36, APRIL 2022

The Triple Crisis in Lebanon

Sami Atallah and Mona Harb

This episode discusses the triple crises in Lebanon and what this means for people's everyday lives at the local level. By triple crisis, we mean the country's economic instabilities, the political situation, and the aftermath of the Beirut explosion in August 2020. How are these crises reflected in Lebanese society? And what does this mean for public space?



EPISODE 37, MAY 2022

How Bureaucrats and Civil Society (Can) Facilitate Clientelism

Agnes Cornell and Marcia Grimes

In the 37th episode of *Governance Uncovered*, Marcia Grimes and Agnes Cornell join us to talk about clientelism. More specifically, their paper "Brokering Bureaucrats: How Bureaucrats and Civil Society Facilitate Clientelism where Parties Are Weak," which focuses on bureaucrats and how their links to civil society can shape clientelism in Peru.

EPISODE 38, JUNE 2022

Voices of Ukraine

Tymofii Brik

Ukrainian scholar Tymofii Brik from the Kyiv School of Economics joins us to talk about local governance in Ukraine today, examining the differences between now and before the invasion. Tymofii also explains how the Ukrainian defence was a seven-year preparation in how the society should organize to protect and defend oneself and one's community.

EPISODE 39, AUGUST 2022

Host State's Reception of Migrants and Refugees

Kelsey Norman

Kelsey Norman, Fellow for the Middle East and Director of the Women's Rights, Human Rights & Refugees program at the Baker Institute for Public Policy at Rice University, discuss her new book *Reluctant Reception*, in which she asks how host states respond to refugees. In doing so, she moves the traditional focus in refugee and migration literature of looking at the Global North and focuses on countries normally seen as transit countries that migrants cross on their way to their country of destination.



EPISODE 40, SEPTEMBER 2022

Traditional Authorities: Insights from Ghana, Malawi, and Latin America

Boniface Dulani, John-Paul Adjadeh, and Christopher Carter

This episode was recorded during GLD's Annual Conference and offers a lively discussion on traditional authorities' impacts on, democracy, corruption, land management, and conflict resolution in Malawi, Ghana, and Latin America.

EPISODE 41, OCTOBER 2022

Everyday Identity and Electoral Politics in South Africa

Dr. Adam Harris

GLD Associate Adam Harris' research focuses on development, ethnic, and African politics. In this episode, Adam talks about his book *Everyday Identity and Electoral Politics: Race, Ethnicity, and the Bloc Vote in South Africa and Beyond*, in which he seeks to understand why some voters do not vote along ethnic lines

EPISODE 42, NOVEMBER 2022

Protests in Iran, Climate Change in the MENA, and Land Politics in Senegal and Zambia

Rouzbeh Parsi, Thabit Jacob, Ghadeer Hussein, and Lauren Honig

This episode includes Rouzbeh Parsi discussing the protests in Iran: is it a revolution? Then, GLD colleagues Ghadeer Hussein and Thabit Jacob discuss the policy roundtable series GLD and APS held on climate change and environmental justice in the MENA. Finally, Ellen Lust met with GLD Associate Lauren Honig to talk about her new book on land titling and customary authorities in Senegal and Zambia.



EPISODE 43, DECEMBER 2022

COP27 Takeaways, Book Talk: *Protesting Jordan*, and Insights from Tanzanian Orphanages

Rabab El-Madi, Nadim Farajalla, Jillian Schwedler, and Bekka Ross Russel

This episode reflects on COP27, the UN climate summit held in November in Cairo, Egypt. Then we'll hear an interview with Professor Jillian Schwedler on her latest book, *Protesting Jordan: Geographies of Power and Dissent*. Finally, an interview with Bekka Ross Russel, Founder and Executive Director of *The Small Things Tanzania* and the *Families and Future Coalition in Tanzania*.

Governance Uncovered: Local Politics and Development, is available on Acast, SoundCloud, and Spotify.



OUR DISSEMINATION



PUBLICATIONS

Peer-Reviewed Articles

Abdulai, Abdul-Gafaru and Appiah, Daniel. (2022). "Conceptualizing and Measuring State Effectiveness as Impartiality," *Public Organization Review*.
[doi:10.1007/s11115-022-00681-2](https://doi.org/10.1007/s11115-022-00681-2)

Blower, Sally; Krönke, Matthias; Okano, Justin T.; and Ponce, Joan. (2022). "Lack of Ownership of Mobile Phones Could Hinder the Rollout of Health Interventions in Africa," *eLife*.
[doi:10.7554/eLife.79615](https://doi.org/10.7554/eLife.79615)

Ferree, Karen. E; Honig, Lauren; Lust, Ellen; and Phillips, Melanie L. (2022). "Land and Legibility: When Do Citizens Expect Secure Property Rights in Weak States?" *American Political Science Review*.
[doi:10.1017/S0003055422000417](https://doi.org/10.1017/S0003055422000417)

Honig, Lauren. (2022). "The Power of the Pen: Informal Property Rights Documents in Zambia," *African Affairs*.
[doi:10.1093/afraf/adab034](https://doi.org/10.1093/afraf/adab034)

Jöst, Prisca and Lust, Ellen. (2022). "Receiving More, Expecting Less? Social Ties, Clientelism and the Poor's Expectations of Future Service Provision," *World Development*.
[doi:10.1016/j.worlddev.2022.106008](https://doi.org/10.1016/j.worlddev.2022.106008)

Kao, Kristen. (2022). "Electoral Institutions and Social Identity Based Clientelism in Jordan." *Political Research Quarterly*.

Kao, Kristen; Lust, Ellen; and Rakner, Lise. (2022). "Vote-Buying, Anti-Corruption Campaigns, and Identity in African Elections," *World Development*.
[doi:10.1016/j.worlddev.2022.106064](https://doi.org/10.1016/j.worlddev.2022.106064)

Books

Harris, Adam. (2022). *Everyday Identity and Electoral Politics: Race, Ethnicity, and the Bloc Vote in South Africa and Beyond*. Oxford: Oxford University Press. [ISBN-10:0197638201](https://doi.org/10.1017/9781009129183)

Honig, Lauren. (2022). *Land Politics: How Customary Institutions Shape State Building in Zambia and Senegal*. Cambridge: Cambridge University Press. [doi:10.1017/9781009129183](https://doi.org/10.1017/9781009129183)

Lust, Ellen. (2022). *Everyday Choices: The Role of Competing Authorities and Social Institutions in Politics and Development*. (Elements in the Politics of Development). Cambridge: Cambridge University Press. [doi:10.1017/9781009306164](https://doi.org/10.1017/9781009306164)



Policy Briefs (by date)

“Where Mosques Can Help Women Solve Community Problems.”

Authors: Brooke, Steven and Komer, Monica C.

The University of Gothenburg, Governance and Local Development Institute: GLD Policy Brief No. 7, February 2022.

“Local Governance in Afghanistan: Six Months After the Taliban Takeover.”

Authors: Bjurenvall, Sara; Paller, Jeffery; and

Shaber-Twedt, Rose. *The University of Gothenburg, Governance and Local Development Institute: GLD Policy Brief No. 8, March 2022.*

“Party Cadres Threaten Peaceful Elections and Everyday Life in Urban Africa.”

Authors: Beardsworth, Nicole and Krönke, Matthias.

The University of Gothenburg, Governance and Local Development Institute: GLD Policy Brief No. 9, April 2022.

“How Civilians Can Make Rebels More Responsive.”

Author: van Baalen, Sebastian. Editors: Paller, Jeffery and

Shaber-Twedt, Rose. *The University of Gothenburg, Governance and Local Development Institute: GLD Policy Brief No. 10, May 2022.*

“Bridging the Research-Policy Divide to Promote Local Development.”

Author: Paller, Jeffery. Editors: Bjurenvall, Sara and

Shaber-Twedt, Rose. *The University of Gothenburg, Governance and Local Development Institute: GLD Policy Brief No. 11, June 2022.*

“The Future of Local Governance and Development in Tunisia.”

Author: Paller, Jeffery. *The University of Gothenburg,*

Governance and Local Development Institute: GLD Policy Brief No. 12, August 2022.

“Agriculture and Local Adaptation to Climate Change in the MENA.”

Author: Paller, Jeffery. Editor: Shaber-Twedt, Rose.

The University of Gothenburg, Governance and Local Development Institute: GLD Policy Brief No. 13, September 2022.

“Confronting Global and Regional Inequalities to Achieve Equity and Climate Justice.”


Author: Paller, Jeffery. Editors: Lust, Ellen and

Shaber-Twedt, Rose. *The University of Gothenburg, Governance and Local Development Institute: GLD Policy Brief No. 13, October 2022.*

“The World’s Most Water Stressed Region Requires Cooperation and Diplomacy.”

Author: Paller, Jeffery. Editors: Dafalla, Salih; Jacob,

Thabit; and Shaber-Twedt, Rose. *The University of Gothenburg, Governance and Local Development Institute: GLD Policy Brief No. 15, December 2022.*



Policy Brief
No. 15. December 2022

The World’s Most Water Stressed Region Requires Cooperation and Diplomacy

Policy Issue
The MENA region faces extreme water scarcity and land degradation. The biophysical environment is deteriorating, and the soil is losing its productive capacity. The region is the world’s most water-stressed, and desertification directly affects 17 countries. Sustainable Development Goal 15 aims to “Protect, restore and promote sustainable use of terrestrial ecosystems, sustainably manage forests, combat desertification, and halt and reverse land degradation and halt biodiversity loss.” Confronting regional inequalities and transboundary political challenges is central to achieving this goal.

If you have the land, you have all things, and if you lose the land, you lose everything.” Today in Sudan, approximately 16 out of 18 states are facing desertification. Moreover, water scarcity affects communities unevenly: some areas have water resources, others have little access to the Nile and its tributaries, and many have no access to fresh water at all.

Oman also suffers from desertification, as 80 percent of the country is desert. “Most of the farm area is reducing,” explained Al-Zeidi, “We are suffering from the death of vegetation.” In addition, the country relies on a traditional irrigation system (Aflaj), and more than one thousand have dried up in recent years.




Photo Credit: Kalle Schmitz, Unplash

The Context
Alternative Policy Solutions (APS) at the American University in Cairo and the Governance and Local Development Institute (GLD) at the University of Gothenburg held a Policy Roundtable on 12 October to discuss land degradation and water scarcity in the Middle East and North Africa, MENA, region. Participants included Dr. Eyad Yacoub – Center of Excellence for Climate Change and Environmental Technologies, Arab American University, Mohamed Salih Dafalla – Faculty of Agriculture, University of Khartoum; Nadim Farajalla – Issam Fares Institute for Public Policy and International Affairs, American University in Beirut; and Khalifa Al-Zeidi – Center for Environmental Studies and Research, Sultan Qaboos University.

Land Degradation and Water Scarcity
Salih outlined land’s social and material importance for local communities. “The dignity of people is tied to land.

Lebanon’s “breadbasket” of the region is also gone. Urban expansion has been significant, and 80 percent of Lebanese now live in urban areas. “We are building right next to the mountains and building right up to the forests,” said Farajalla, “We are getting forest fires.” Coastal aquifers are also turning salty, the water table is dropping, and the frequency of rain is shifting seasons. Drought is threatening agriculture in Palestine, and farmers have been forced into serious debt. Farmers are often forced to lease land or give it up, while many others have fled to Israel for more economic opportunities.

Access all GLD policy briefs
by scanning the QR-code.



GLD eJournal

Local Authorities, *University of Gothenburg, Governance and Local Development Institute Research Paper Series*, Vol. 14.

<https://www.ssrn.com/index.cfm/en/u-gothenburg-program-governance-res/>

Social Contact and Political Control, *University of Gothenburg, Governance and Local Development Institute Research Paper Series*, Vol. 15. <https://www.ssrn.com/index.cfm/en/u-gothenburg-program-governance-res/>

Reports

Governance and Local Development Institute. (2022). “The Economics of Social Science in the Middle East and North Africa: Contextual Examination of Regional Social Science Knowledge Production and Dissemination,” First Version. Eds. Andersson, Hanna; Bergman, Jennifer; Bjurenvall, Sara; Bäck Persson, Kristin; Ghassaban Kjellén, Mina; Hultén, Emelie; Jennebratt, Paulina; Lust, Ellen; Metheney, Erica Ann; Nibrant, Linnéa; Sigrell Joel, *The University of Gothenburg, Governance and Local Development Institute.*

Other Publications

Bjurenvall, Sara. (2022) “Adaption to Climate Change Must Consider the Local,” *University of Gothenburg.*

<https://www.gu.se/en/news/adaption-to-climate-change-must-consider-the-local>

Bjurenvall, Sara. (2022). “Introducing Alesha Porinsky,” ed. Shaber-Twedt, Rose. *GLD Fellow Interview Series*, January.

Bjurenvall, Sara. (2022). “Introducing Alexandra Blackman,” ed. Shaber-Twedt, Rose. *GLD Fellow Interview Series*, February.

Bjurenvall, Sara. (2022). “Introducing Andy Harris,” ed. Shaber-Twedt, Rose. *GLD Fellow Interview Series*, March.

Bjurenvall, Sara. (2022). “Introducing Catlan Reardon,” ed. Shaber-Twedt, Rose. *GLD Fellow Interview Series*, April.

Bjurenvall, Sara. (2022). “Introducing Christopher Gore,” ed. Shaber-Twedt, Rose. *GLD Fellow Interview Series*, May.

Bjurenvall, Sara. (2022). “Introducing Hans Lueders,” ed. Shaber-Twedt, Rose. *GLD Fellow Interview Series*, June.

Bjurenvall, Sara. (2022). “Introducing Ian Madison,” ed. Shaber-Twedt, Rose. *GLD Fellow Interview Series*, August.

Bjurenvall, Sara. (2022). “Introducing Eitan Paul,” ed. Shaber-Twedt, Rose. *GLD Fellow Interview Series*, September.

Bjurenvall, Sara. (2022). “Introducing Matthias Krönke,” ed. Shaber-Twedt, Rose. *GLD Fellow Interview Series*, October.

Bjurenvall, Sara. (2022). “Introducing Marie Gagné,” ed. Shaber-Twedt, Rose. *GLD Fellow Interview Series*, November.

Bjurenvall, Sara. (2022). “Introducing Sombo Muzata,” ed. Shaber-Twedt, Rose. *GLD Fellow Interview Series*, December.

Grimm, Jannis J.; Lust, Ellen; Koehler, Kevin; Parkinson, Sarah E.; Schierenbeck, Isabell; Zayed, Dina. (2022).

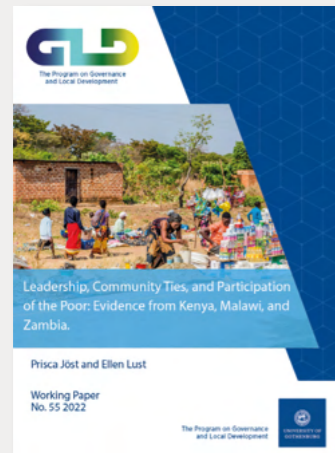
“Symposium: Back to Field: Uncertainty and Risk in Field Research,” *Qualitative and Multi-Method Research Newsletter*, 20(2), 21-24.

Krönke, Matthias. (2022). “The State of the Judiciary in Malawi, Namibia and South Africa: Court Users’ and Judges’ Perspectives.” Report in *Democratic Governance and Rights Unit*, University of Cape Town.

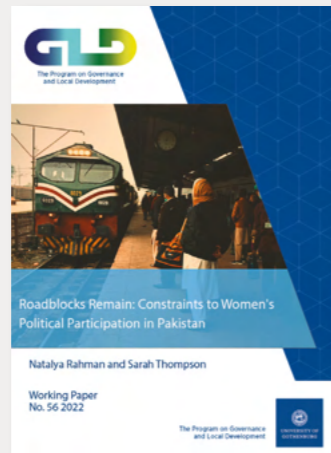
Krönke, Matthias. (2022). “Broad Support for Multiparty Elections, Little Faith in Electoral Institutions: Uganda in Comparative Perspective,” *Afrobarometer Policy Paper*, No. 79. <https://www.afrobarometer.org/publication/pp79-broad-support-multiparty-elections-little-faith-electoral-institutions-uganda/>



GLD Working Papers



Jöst, Prisca and Lust, Ellen. (2022). "Leadership, Community Ties, and Participation of the Poor: Evidence from Kenya, Malawi, and Zambia," *Governance and Local Development Institute*, Working Paper no.55, University of Gothenburg.



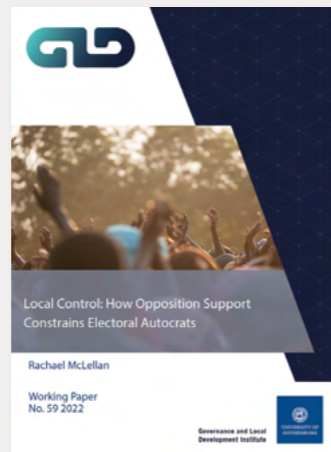
Rahman, Natalya and Thompson, Sarah. (2022). "Roadblocks Remain: Constraints to Women's Political Participation in Pakistan," *Governance and Local Development Institute*, Working Paper no.56, University of Gothenburg.



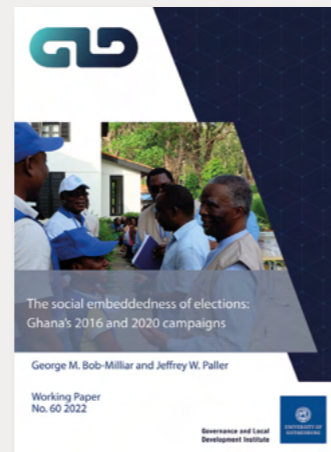
Kao, Kristen and Lust, Ellen. (2022). "Do List Experiences Run as Expected? Examining Implementation Failure in Kenya, Zambia, and Malawi," *Governance and Local Development Institute*, Working Paper no.57, University of Gothenburg.



Bollen, Paige. (2022). "The (Spatial) Ties that Bind: Frequent Casual Contact, the Shadow of the Future, and Prosociality Across Ethnic Divisions," *Governance and Local Development Institute*, Working Paper no.58, University of Gothenburg.



McLellan, Rachael. (2022). "Local Control: How Opposition Support Constrains Electoral Autocrats," *Governance and Local Development Institute*, Working Paper no.59, University of Gothenburg.



Bob-Millar, George M. and Paller, Jeffrey W. (2022). "The Social Embeddedness of Elections: Ghana's 2016 and 2020 Campaigns," *Governance and Local Development Institute*, Working Paper no.60, University of Gothenburg.



Yasun, Salih. (2022). "The Municipal Finances and Challenges of Municipal Taxation in Post-Revolutionary Tunisia," *Governance and Local Development Institute*, Working Paper no.61, University of Gothenburg.

Access all GLD working papers by scanning the QR-code.



PRESENTATIONS

2022 (sorted by date)

Lust, Ellen. (Discussant). "Structural Characteristics of Long-Term Care Facilities and Covid-19 Mortality: Evidence from Sweden," by Rasmus Broms, Carl Dahlström, Jenna Nayar, and Marina Nistotskaya. *QoG Internal Conference*, 9 February.

Lust, Ellen and Jöst, Prisca. "Leadership, Community Ties, and Participation of the Poor: Evidence from Kenya, Malawi, and Zambia," *QoG Internal Conference*, 9 February.

Lust, Ellen. "The Effects of Gender Representation in Jordan, Morocco, and Tunisia," *Politics & Gender Workshop*, University of Gothenburg, 23 February.

Lust, Ellen. (Discussant). "Anti-Feminism within the Post-Socialist Legacy of Gender Equality: An Interview Study on East German Radical Right Supporters' Understanding of Gender and Gender Equality," by Gefjon Off. *Politics & Gender Workshop*, University of Gothenburg, 23 February.

Lust, Ellen. "Identity, Information and Voting: Lessons from African Elections," co-authored with Karen E. Ferree, Cecilia Ahsan Jansson, and Erica Ann Metheney, *GLD Spring Work-in-Progress Series*, 29 March.

Jöst, Prisca. "Leadership, Community Ties, and Participation of the Poor. Evidence from Kenya, Malawi and Zambia," co-authored with Ellen Lust, *Inequality Conference*, University of Konstanz, 6-8 April.

Lust, Ellen. "The Effects of Gender Representation in Jordan, Morocco, and Tunisia," *Comparative Politics Colloquium*, University of Wisconsin-Madison, 14 April.

Harris, Adam. "Politics and Vaccine Hesitancy: Evidence from Malawi," co-authored with Kim Yi Dionne, Boniface Dulani, Karen E. Ferree, Weiyi Shi, *Innovations for Peace and Development*, University of Texas at Austin, 22 April.

Blackman, Alexandra. "Politicians' Strategic Response to Gender Quotas in Tunisia's 2018 Municipal Elections," *Gender and Politics in the MENA Workshop*, 10 May.

Lust, Ellen. (Chair). "Gender and Authoritarian Politics I," *Gender and Politics in the MENA Workshop*, 10 May.

Lust, Ellen. (Discussant). "Gender and Authoritarian Politics II," *Gender and Politics in the MENA Workshop*, 10 May.

Lust, Ellen. (Non-Presenting Co-Author). "Work Like a Man? Gender and Candidate Background in the Arab World," co-authored with Lindsay Benstead, *Gender and Politics in the MENA Workshop*, 11 May.

Gore, Christopher. (Moderator). "Policy Discussion Session 1," *GLD 5th Annual Conference*, 23 May.

Harris, Andy. (Non-Presenting Co-Author). "A Booth of One's Own: Gender and Turnout in Pakistan," co-authored with Rabia Malik, *GLD 5th Annual Conference*, 23 May.

Lust, Ellen. (Non-Presenting Co-Author). "Traditional Leadership Contestations in Ghana: The Role of Gender and Institutions on Chieftaincy Succession Resolution," co-authored with Daniel Appiah and John-Paul Adjadeh, *GLD 5th Annual Conference*, 23 May.

Lust, Ellen. "Authority and Mobilization: The Role of Leader Influence, Centrality and Domain Congruence on Campaign Participation in Zambia," co-authored with Prisca Jöst, *GLD 5th Annual Conference*, May 23.

Gore, Christopher. "Urban Policy Diffusion in Africa: Explaining Convergence and Divergence in Cities," *GLD 5th Annual Conference*, 24 May.

Jacob, Thabit. (Chair). "Panel 3: A Helping Hand? The Role of Citizen Participation in Development," *GLD 5th Annual Conference*, 24 May.

Paul, Eitan. "Raising Representation? Gender and Village Budgeting Reforms in Indonesia," *GLD 5th Annual Conference*, 24 May.

Wahman, Michael. "Controlling Territory, Controlling Voters: The Electoral Geography of African Campaign Violence," Invited talk at the *African Politics seminar*, London School of Economics, 24 May.

Jerzak, Connor. (Chair). "Panel 5: The Different Faces of Extraction: Labor, Taxation, and Other Resources," *GLD 5th Annual Conference*, 25 May.

Lust, Ellen. "What's in It for Me? The Role of Service Provision for Taxpayer Attitudes in Sub Saharan Africa," *GLD 5th Annual Conference*, 25 May.

Lust, Ellen. (Non-Presenting Co-Author). "Enhancing Tax Morale for Improved Domestic Resource Mobilization in Sub-Saharan Africa: Evidence from a Cross-Country Survey," co-authored with Cecilia Ahsan Jansson and Alex Oguso, *GLD 5th Annual Conference*, 25 May.

Honing, Lauren. (Panelist). "Experiences of Academic Mobility in National and International Contexts," With Adam Harris and Ellen Lust. *Wenner-Gren Foundation International Symposium*, 2 June.

Lust, Ellen. "Identity, Information and Voting: Lessons from African Elections," co-authored with Karen E. Ferree; Cecilia Ahsan Jansson; Erica Ann Metheney. *EPSA Annual Conference*, 23 June.

Lust, Ellen. (Non-Presenting Co-Author). "Social Institutions and State Reach: Examining Change in Gendered Land Rights in Southern Africa," co-authored with Lauren Honig and Adam Harris, *EPSA Annual Conference*, 23 June.

Jöst, Prisca. "Receiving More, Expecting Less? Social Ties, Clientelism and the Poor's Expectations of Future Service Provision," co-authored with Ellen Lust, *Inequality Colloquium, Cluster of Excellence The Politics of Inequality*, University of Konstanz, July 2022.

Lust, Ellen. "Everyday Choices: The Role of Competing Authorities and Social Institutions in Politics and Development," *Department of Social and Political Science*, European University Institute, 12 July.

Paller, Jeffrey. (Chair). "Bureaucracy for Humans: How States Can See the Whole Person," *ID Insight's Dignity Research Symposium*, 12 September.

Paller, Jeffrey. "Political Mobilization in 21st Century Cities: Resistance, Reform, Renewal," *APSA Annual Meeting and Exhibition 2022*, 14 September.

Lust, Ellen. "Leadership and Mobilization," (Chair) *APSA Annual Meeting and Exhibition 2022*, 15 September.

Jöst, Prisca. "Authority and Mobilization: The Role of Leaders on Campaign Participation," co-authored with Ellen Lust, *APSA Annual Meeting and Exhibition 2022*, 15 September.

Lust, Ellen. "Author Meet Critics: Mobilizing for Elections: Patronage and Political Machines in Southeast Asia," *APSA Annual Meeting and Exhibition 2022*, 15 September.

Ferree, Karen E.; Harris, Adam; Plouffe, Michael; Liu, Lang; and Shi, Weiyi. "Project Diplomacy: Do the Characteristics of Investment Projects Shape Perceptions of China and Chinese Investment in Africa?" *APSA Annual Meeting and Exhibition 2022*, 16 September.

Kerr, Nicholas; Krönke, Matthias; and Wahman, Michael. "Perceptions of Electoral Integrity and Competitive Authoritarian Turnovers," *APSA Annual Meeting and Exhibition 2022*, 16 September.

Lust, Ellen. (Chair). "Novel Tools to Understanding Institutions in the Middle East and North Africa," *APSA Annual Meeting and Exhibition 2022*, 16 September.

Lust, Ellen. (Discussant). "Services and Political Support in Electoral Autocracies - Evidence from Russia," *APSA Annual Meeting and Exhibition 2022*, 16 September.

Lust, Ellen. (Discussant). "Resistance and Opposition Repertoires under Authoritarianism," *APSA Annual Meeting and Exhibition 2022*, 16 September.

Paller, Jeffrey. (Chair). "Urbanization and Political Change in Africa," *APSA Annual Meeting and Exhibition 2022*, 16 September.



Paller, Jeffrey. "Claiming the City: Demanding Representation in Urban Africa," *APSA Annual Meeting and Exhibition 2022*, 16 September.

Lust, Ellen. (Discussant). "Enduring Effects of Covid-19: A Global Perspective," *APSA Annual Meeting and Exhibition 2022*, 17 September.

Jöst, Prisca; Krönke, Matthias; Lockwood, Sarah J.; and Lust, Ellen. "The Role of Partisanship, Identity and Incentives in Mobilizing Zambian Citizens," *APSA Annual Meeting and Exhibition 2022*, 17 September.

Lust, Ellen. (Chair). "New Frontiers of Research on Gender in MENA Politics," *APSA Annual Meeting and Exhibition 2022*, 18 September.

Marwa Shalaby. "Gender, Group Composition and Perceptions of Legitimacy," co-authored with Ellen Lust and Kristen Kao, *APSA Annual Meeting and Exhibition 2022*, 18 September.

Metheny, Erica Ann. "Challenges and Solutions for Incorporating Data into Policy Briefs," *Southern Illinois University Edwardsville*, 19 September.

Metheny, Erica Ann. "Statistical Challenges in Measuring Local Governance," *Southern Illinois University Edwardsville*, 23 September.



Photo Credit: Sara Bjurenvall

Muzata, Sombo. "Proposing a Framework for Public Debt Management," *American Society for Public Administration*, 23 September.

Lust, Ellen. (Panellist). "How Have the Ukraine War, Pandemic & NewTech Changed Geopolitics?" *Renaissance Weekend*, 7 October.

Lust, Ellen. "Today's Saudi Arabia," Cornerstone - Global Outlook, *Renaissance Weekend*, 8 October.

Lust, Ellen. "The Middle East," Cornerstone Conversation - Foreign Relations Realities, *Renaissance Weekend*, 9 October.

Lust, Ellen. "Everyday Choices: The Role of Competing Authorities and Social Institutions in Politics and Development," *National Endowment for Democracy*, 12 October.

Metheny, Erica Ann. "Towards Analyzing Governance as a Complex System: A Tool for Measuring Local Governance," *Conference on Complex Systems*, 19 October.

Gore, Christopher. "The Politics of Electricity 'Access for All' in Africa," co-authored with Liz Baldwin, Jennifer Brass, Lauren MacLean, Winnie Mitullah, and Alesha Porisky. *Earth Systems Governance Annual Conference*, 23 October.

Lust, Ellen. "Barriers and Boundaries in Domestic Migration," *The Role of Political and Social Institutions in the Integration of Refugees into Host Cities - SIPGI 2022*, 24 October.

Paller, Jeffrey. "The Contentious Politics of African Urbanization," *Swedish Collegium for Advanced Study*, 8 November.

Lust, Ellen. "Everyday Choices: The Role of Competing Authorities and Social Institutions in Politics and Development," *IRPS Colloquium*, The Graduate Institute Geneva, 8 November.

Lust, Ellen. "Everyday Choices: The Role of Competing Authorities and Social Institutions in Politics and Development," *Comparative Politics and Workshop on Arab Political Development*, Princeton University, 16 November.

Hussein, Ghadeer. "Climate Change and Sustainability Challenges in the Middle East and North Africa," *ACT Sustainable 2022*, 17 November.

Lust, Ellen. (Chair). "Does Identity Matter? Exploring the Link Between Governance and Representation," *ASA Annual Meeting*, 17 November.

Jöst, Prisca. "Authority and Mobilization: The Role of Leader Influence, Centrality and Domain Congruence on Campaign Participation in Zambia," co-authored with Ellen Lust, *ASA Annual Meeting*, 18 November.

Lust, Ellen. (Critic). "Authors Meet Critic: Democratic Backsliding in Africa? Autocratization, Resilience, and Contention," *ASA Annual Meeting*, 18 November.

Lust, Ellen. "The Role of Partisanship, Identity, and Incentives in Mobilizing Zambian Citizens," co-authored with Prisca Jöst, Matthias Krönke, and Sarah Lockwood, *ASA Annual Meeting*, 18 November.

Lust, Ellen. "Everyday Choices: The Role of Competing Authorities and Social Institutions in Politics and Development," *Bogazici University*, 2 December.

Lust, Ellen. "Everyday Choices: The Role of Competing Authorities and Social Institutions in Politics and Development," *NYU Abu Dhabi Department of Political Science Seminar*, 7 December.



Marwa Shalaby (1st photo) and Lauren Honing (2nd photo) at GLD's 5th Conference

Photo Credit: Sara Bjurenvall

WHAT'S NEXT?

GLD IN 2023

New Projects.

Jeffrey Paller (PI) and Ellen Lust (co-applicant) have received 12 million SEK in funding from *The Swedish Research Council* for the project "Political Change and Local Governance in Emerging Cities." This project will run between 2023 and 2026. The overarching project goals are to implement the LGPI in three secondary cities in Brazil, Ghana, and Tunisia; develop theoretical insights into governance and development; and disseminate findings to scholars, policymakers, and practitioners. It will bring together researchers from higher education institutions working on and based in Latin America, Africa, and the Middle East and North Africa.

Ellen Lust has also been awarded \$244,000 USD by the *Hicham Alaoui Foundation* for the project: *Competing Authorities in the Middle East and North Africa*. This project will last four years (2023-2026) and draws on the theoretical framework presented in her new Cambridge Element, "Everyday Choices: The Role of Competing Authorities and Social Institutions in Politics and Development" (2022). It aims to explain how and when different authorities, within and outside the state, shape political behaviour and development outcomes in the Middle East and North Africa.

Local Governance Process Indicators - LGPI

Looking to 2023, we are excited to put our LGPI indicators to the test! We plan to bring together experts on the LGPI sections and experts on different states to investigate the practicality, efficacy, and global applicability of our indicators. We are also hiring two post-doctoral researchers, one focusing on social science theory and another in computation to round out the LGPI team.

A Growing Team

We are currently in the process of hiring new post-docs, research associates, and a program coordinator all of whom, hopefully, be joining us in early 2023. We look forward to expanding our team and adding with new energy and competence!

Conferences

May 23-24 GLD's 6th Annual Conference - *Contested Authority at the Local Level: Implications for Governance, Policy Outcomes, and Service Provision* - will be held May 22-24, 2023 at Nääs Fabriker, Tollerød, Sweden. It aims to bring together an international group of scholars and practitioners studying issues and questions about 'contested authority' at the sub-national level.

SWEMENA Conference 2023. As a member organization, we will take part in the SWEMENA (Sweden Middle East and North Africa Network) Conference in 2023 (date TBD). Keep an eye on our website for more information.

A Website Lift

We are in the process of updating our website to make it easier to navigate for visitors and improving searchability. The update will also allow for a new, more interactive presentation of datasets. Our hope is to make GLD's mission and work more accessible for our users.

List of Staff and Collaborators

Acronyms:

A = Associate
 AC = Annual Conference Participants
 CR = Collaborating Researcher
 D = Director
 F = Fellow
 GP = Gender and Politics Conference Participants
 I = Intern
 PR = Postdoctoral Researcher
 PhD = Doctoral Student
 RT = Policy Roundtable
 S = Staff
 SRL = SRL Project Participant
 STG = Short-Term Grant Awardee
 VS = Visiting Scholar
 W = Workshop Participant

Adam Harris, University College London, UK (A, CR, SRL, W)
Agnes Cornell, University of Gothenburg, Sweden (W)
Ahmed Morsy, Stockholm International Peace Research Institute, Sweden (AC)
Aili Tripp, University of Wisconsin-Madison, USA (GP)
Alesha Porisky, Northern Illinois University, USA (F, W)
Alex Oguso, Kenya Revenue Authority, Kenya (AC, SRL, W)
Alexander Yeandle, London School of Economics, UK (STG, W)
Alexandra Blackman, Cornell University, USA (AC, CR, F, GP, W)
Allen Hicken, University of Michigan, USA (AC)
Amanda Robinson, Ohio State University, USA (SRL, W)
Amy Alexander, University of Gothenburg, Sweden (GP)
Ana Maria Vargas Falla, Swedish International Centre for Local Democracy (AC)
Andy Harris, New York University Abu Dhabi, United Arab Emirates (AC, F, W)
Ashrakat Elshehawey, University of Oxford, UK (W)
Asma Khalifa, Arab Reform Initiative Team, Libya (RT)
Aytug Sasmaz, Bryn Mawr College, USA (CR)
Baris Soybilgen, University of Gothenburg, Sweden (S)
Barry Maydom, Birkbeck University, UK (AC, SRL)
Benjamin Cashore, Lee Kuan Yew School of Public Policy, Singapore (W)
Boniface Dulani, University of Malawi & Institute of Public Opinion and Research, Malawi (A, AC, W)
Bozena Welborne, Smith College, USA (GP)
Camille Barras, University of Cambridge, UK (W)
Carolyn Barnett, University of Arizona, USA (CR, GP)
Catlan Reardon, Stanford University, USA (AC, F)
Cecilia Ahsan Jansson, University of Gothenburg, Sweden (A, AC, CR, SRL)
Charlotta Junger, University of Gothenburg, Sweden (S)
Christiania Parreira, The Geneva Graduate Institute, Switzerland (CR)
Christopher Carter, University of Virginia, USA (AC)
Christopher Gore, Toronto Metropolitan University, Canada (AC, F)
Connor Jerzak, University of Texas, USA (VS)
Dalila Kurtalija Sabanic, University of Gothenburg, Sweden (S)
Daniel Appiah, University of Ghana, Ghana (A, CR)
Daniel Posner, University of California Los Angeles, USA (W)
Dina Shehata, Al Ahran Center for Political and Strategic Studies, Egypt (RT)
Eitan Paul, Abdul Latif Jameel Poverty Action Lab, USA (AC, F)

Eliphaz Kuseni, Multiconsult-Partners (AC, SRL)
Ellen Lust, University of Gothenburg, Sweden (D)
Emelie Hultén, University College Dublin, Ireland (I)
Erica Ann Metheney, University of Gothenburg, Sweden (S)
Erin Fletcher, Altitude Worldwide Research, USA (AC)
Federica Duca, University of the Witwatersrand, South Africa (W)
Felipe Torres, University of Oxford, UK (W)
Felix Dwinger, University of Gothenburg, Sweden (PhD)
Frances Brown, Carnegie Endowment for International Peace, USA (RT)
Francesco Colin, Erasmus University Rotterdam, Netherlands (CR)
Frida Borång, University of Gothenburg, Sweden (AC)
Gamze Cavdar, Colorado State University, USA (GP)
Ghadeer Hussein, University of Gothenburg, Sweden (S)
Gowokani Chirwa, University of Malawi (SRL)
Gwyneth McClendon, New York University, USA (W)
Hannah Early Bagdanov, University of Notre Dame, USA (STG)
Hangala Siachiwena, University of Cape Town, (SRL)
Hans Lueders, Princeton University, USA (AC, F)
Hebatullah Saleh, University of Gothenburg, Sweden (I)
Ian Madison, London School of Economics, UK (AC, F)
Inan Izci, Argüden Governance Academy, Türkiye (AC)
Intissar Kherigi, Sciences Po Paris, France (CR, RT, W)
Isis Nusair, Denison University, USA (GP)
Jeffrey Paller, University of Gothenburg, Sweden (S)
Jennifer Bergman, University of Gothenburg, Sweden (S)
Jennifer Murtazashvili, University of Pittsburgh, USA (A, AC, RT)
Jeremy Horowitz, Dartmouth College, USA (AC, SRL)
Jeremy Seekings, University of Cape Town, South Africa (CR)
Jillian Schwedler, City University of New York's Hunter College and The Graduate Center (VS)
Joel Sigrell, University of Stockholm, Sweden (I)
John Maara, University of Nairobi, Kenya (AC, SRL)
John-Paul Adjadeh, Ministry of Chieftaincy and Religious Affairs, Ghana (AC, CR)
Joseph Asunka, Afrobarometer, Ghana (AC)
Joyce Makuei, United Nations Development Programme, South Sudan (I)
Julia Clark, World Bank, USA (CR)
Karen E Ferree, University of California San Diego, USA (A, CR, W)
Kate Baldwin, Yale University, USA (A, CR)
Kelsey Norman, Rice University, USA (GP)
Khalid Fahim, The Swedish Committee for Afghanistan, Sweden (RT)
Khalifa Al-Zeidi, Sultan Qaboos University, Oman (RT)
Kimuli Kasara, Columbia University, USA (AC, VS)
Kirk Ammerman, University of Gothenburg, Sweden (S)
Kristen Kao, University of Gothenburg, Sweden (CR, W)
Kristin Bäck Persson, University of Gothenburg, Sweden (I)
Lana Salman, Harvard University, USA (RT)
Lauren Honig, Boston College, USA (A, AC, CR)
Lena Wängnerud, University of Gothenburg, Sweden (CR, GP)
Lihli Ben Shitrit, University of Georgia, USA (GP)
Lindsay J. Benstead, Portland State University, USA (CR, GP)
Mahmoud Jaraba, Erlangen Centre for Islam and Law in Europe, Germany (GP)
Marcia Grimes, University of Gothenburg, Sweden (AC, W)
Marcus Tannenberg, University of Gothenburg, Sweden (PhD)
Maria Holt, University of Westminster, UK (GP)



Marie Gagné, Concordia University, Canada (AC, F, STG)
Marika Sosnowski, German Institute of Global and Area Studies, Germany (CR, VS, W)
Marja Hinfelaar, Southern African Institute for Policy and Research, Zambia (AC, CR)
Marwa Shalaby, University of Wisconsin-Madison, USA (A, AC, CR, GP, RT, VS, W)
Matt Buehler, University of Tennessee, USA (CR)
Matthias Krönke, University of Cape Town, South Africa (AC, CR, F)
Meredith Weiss, University at Albany, USA (AC)
Meriem Aissa, Texas Woman's University, USA (GP)
Michael Wahman, Michigan State University, USA (CR)
Mina Ghassaban Kjellén, Swedish Migration Office, Sweden (S)
Mine Eder, Bogazici University, Türkiye (A, AC)
Mohamed Salih, University of Khartoum, Sudan (RT)
Mohamed-Dhia Hammami, Syracuse University, USA (RT)
Mohammed Qadam Shah, Seattle Pacific University, USA (RT)
Monica Komer, University of Wisconsin Madison, USA (CR, GP)
Nadim Farajalla, American University in Beirut, Lebanon (RT)
Nelson Ruiz, University of Essex, UK (W)
Nermin Allam, Rutgers University, USA (GP)
Nicole Beardsworth, University of the Witwatersrand, South Africa (CR)
Niels Terpstra, Radboud University, Netherlands (AC)
Noah Nathan, Massachusetts Institute of Technology, USA (W)
Pablo Balan, Tel Aviv University, Israel (W)
Patricia Funjika, University of Zambia, Zambia (AC, SRL)
Paulina Jennebratt, University of Gothenburg, Sweden (I)
Pierre Landry, Chinese University of Hong Kong, China (A, AC, CR)
Pinar Dokumaci, University of York, UK (GP)
Prisca Jöst, University of Konstanz, Germany (A, CR, W)
Rabia Malik, University of Essex, UK (AC)
Rabih Helou, University of Pittsburgh, USA (AC)

Rafiah Al Talei, Carnegie Endowment for International Peace, USA (RT)
Rehab Sakr, Cairo University, Egypt (AC)
Rose Shaber-Twedt, University of Gothenburg, Sweden (S)
Salih Yasun, Indiana University at Bloomington, USA (AC)
Samuel Wakuma, University of Gothenburg, Sweden (S)
Sara Bjurenvall, University of Gothenburg, Sweden (S)
Sarah Yerkes, Carnegie Endowment for International Peace, USA (RT)
Sebastian van Baalen, Uppsala University, Sweden (AC)
Shivan Fazil, Stockholm International Peace Research Institute, Sweden (RT)
Simona Sharoni, Merrimack College, USA (GP)
Sombo Muzata, James Madison University, USA (F)
Steven Brooke, University of Wisconsin Madison, USA (CR, W)
Summer Forester, Carleton College, USA (GP)
Sylvia Bergh, Erasmus University Rotterdam, Netherlands (CR)
Tanya Zion-Waldoks, Hebrew University of Jerusalem, Israel (GP)
Thabit Jacob, University of Gothenburg, Sweden (PR, RT, S)
Timor Sharan, Global Dialogue, UK (RT)
Tove Wikehult, The University of Gothenburg, Sweden (S)
Tuba Kanci, Kocaeli University, Türkiye (GP)
Tugba Bozcaga, King's College London, UK (F)
Valeriya Mechkova, University of Gothenburg, Sweden (CR, GP, W)
Victor Lapuente Gine, University of Gothenburg, Sweden (W)
Victor Saidi Phiri, Lund University, Sweden (I)
'Yahia Gumaa, University of Khartoum, Sudan (RT)
Yasmin Chilmeran, Swedish Institute of International Affairs, Sweden (GP)
Yemi Adamolekun, Enough is Enough Nigeria, Nigeria (AC)
Yuree Noh, Rhode Island College, USA (GP)



**Governance and Local
Development Institute**

FUNDERS



FORMAS 



Governance and Local Development Institute

Department of Political Science, University of Gothenburg

Box 711, 405 30 Gothenburg, Sweden

Visiting Address: Sprängkullsgatan 19, Gothenburg

contact@gld.gu.se